



Redfern, NSW
60/249-253 Chalmers Street

1 BED **1** BATH **1** CAR

CPS Property
passionately committed

EXECUTIVE PARK-SIDE ONE BEDROOM IN PREMIER 'MORTON ON THE PARK' COMPLEX

Available: 4th July 2025

Initial Lease Period: 6 or 12 months

Inspect: By Appointment

**** BUILDING ACCESS FROM TURNER STREET ****

LEASED

Contact: Alistair Lees
0488556634

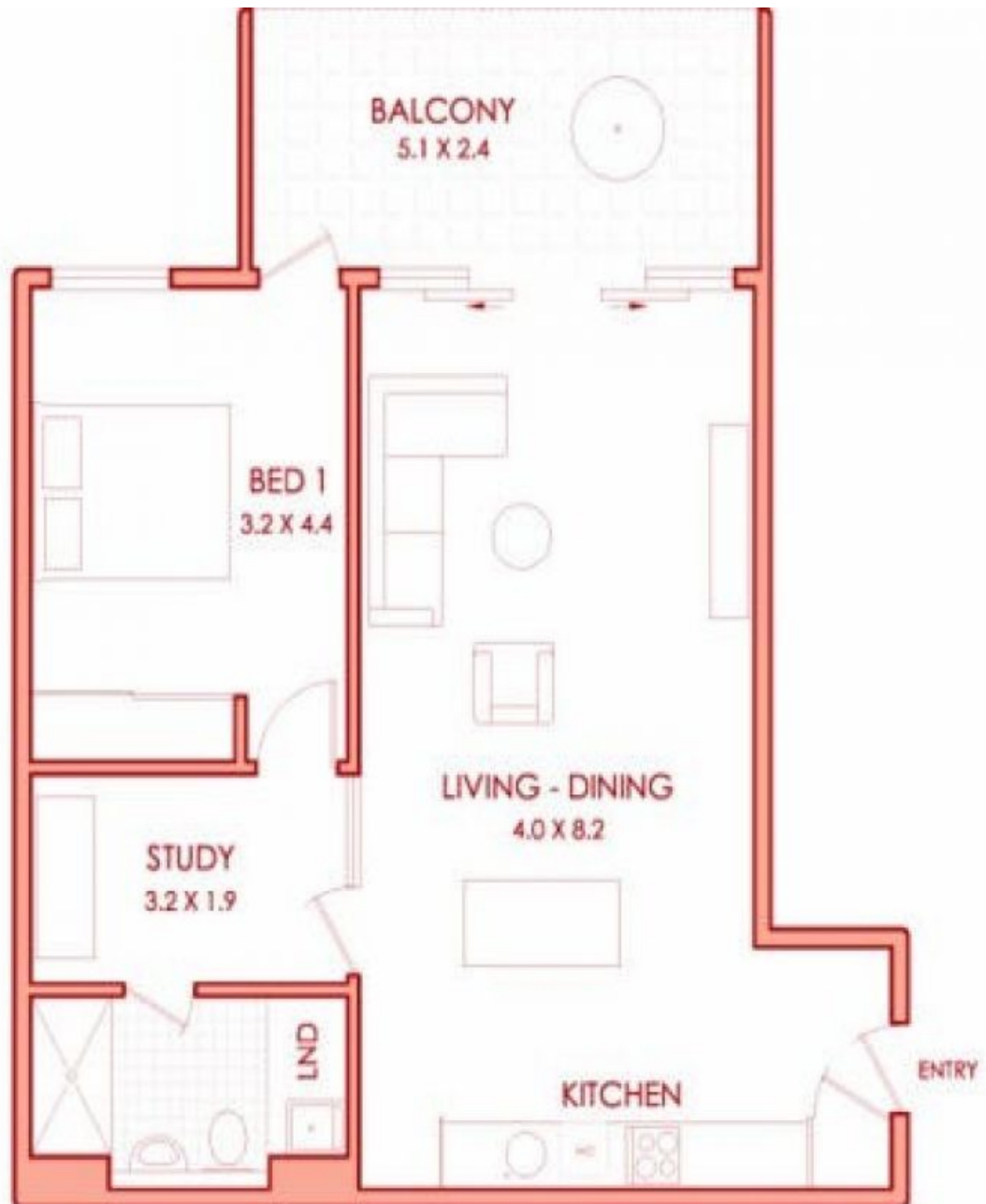
Type: Apartment

Date Available: 04/07/2025

Bond: \$3040

<https://www.cpsproperty.com.au>

Privately positioned towards the rear of one of Redfern's most popular park-side developments - 'Morton on the Park', this stylish one bedroom residence enjoys open plan living with an additional study space & private leafy aspects over the central courtyard. This well appointed one bedroom residence showcases an executive city fringe lifestyle with its bright open plan living space capturing tranquil aspects. Enjoying a convenient location in the heart of vibrant Redfern just moments to buzzing local cafes, award winning bars



Plans shown are only indicative of layout. Dimensions are approximate.

We believe the information in this document to be reliable, however interested persons should make their own enquiries. Dimensions are approximate.

Redfern, NSW
60/249-253 Chalmers Street