



Balmain, NSW
1/51 Donnelly St

1 BED
1 BATH
1 CAR

CPS Property
passionately committed

UPDATED PARK-SIDE ONE BEDROOM LOCATED ON THE BALMAIN FORESHORE

Available: 22 March 2023

Initial Lease Period: 12 months

Inspect: Thursday 23rd March - 2:00pm to 2:15pm

Quietly elevated off the ground floor of a charming park-side security complex, this one bedroom residence enjoys recently refreshed interiors & a sunny westerly aspect with only one common wall. Conveniently set within a premier tree-lined street close to the harbour foreshore, this refurbished boutique block of just twelve units is situated on Birrung Park just a short stroll to Darling Street's cosmopolitan village shops with vibrant boutiques, award-winning eateries, historic pubs & local breweries in addition to public transport options to the

LEASED

Contact: Alistair Lees
0488556634

Type: Unit

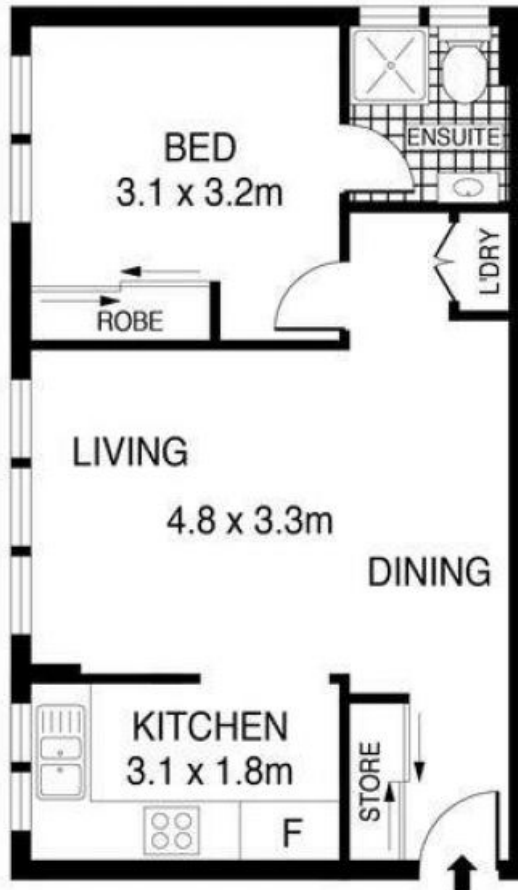
Date Available: 22/03/2023

Bond: \$2380

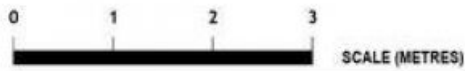
<https://www.cpsproperty.com.au>



GROUND LEVEL



ELEVATED GROUND LEVEL



PLANS SHOWN ONLY INDICATIVE OF LAYOUT. DIMENSIONS ARE APPROXIMATE.
Ref. No: 91286

Internal : 41m²
Parking : 12m²
Total Area : 53m²



1/51 DONNELLEY STREET

BALMAIN

Plans shown are only indicative of layout. Dimensions are approximate.

Balmain, NSW
1/51 Donnelly St