



Alexandria, NSW
6/44-58 Belmont Street

2
BED

2
BATH

2
CAR



CPS Property
passionately committed

NORTH-FACING TWO BEDROOM GARDEN APARTMENT IN POPULAR 'NEOMETRO' COMPLEX

Available: 28th January 2023

Initial Lease Period: 6 or 12 months

Inspect: By Appointment

Boasting a private northerly aspect with lovely leafy outlooks into the central courtyard, this sun-drenched executive residence enjoys bright open plan interiors spanning across a generous floorplan & is desirably positioned in a cul-de-sac on the fringe of Alexandria Park. Tucked away at the front of the popular 'NeoMetro' complex, this freshly carpeted two bedroom residence is conveniently situated just moments to vibrant local cafes, award-winning bars & eateries, boutique shopping, Alexandria Park on the doorstep as well as a selection of nearby schools in addition

LEASED

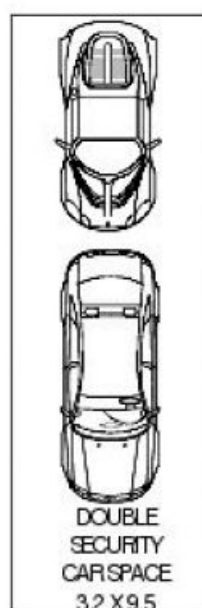
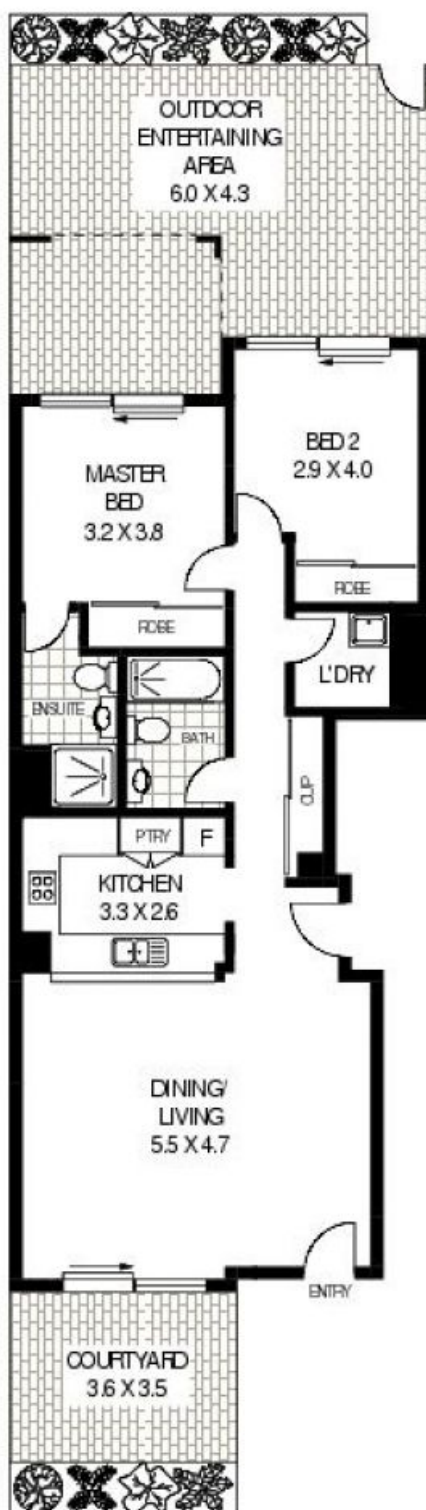
Contact: Alistair Lees
0488556634

Type: Apartment

Date Available: 28/01/2023

Bond: \$3400

<https://www.cpsproperty.com.au>



APPROX: GROSS INTERNAL AREA: 79 SQM



GROUND FLOOR

6/58 BELMONT STREET

ALEXANDRIA

Floor Plan Disclaimer: Wind the Gap (nig) floor plans / site plans are intended as an approximate guide only. No representations or warranties of any nature are given or intended and anyone using this information other than as a guide should always rely on their own enquiries. Wind the Gap property marketing services / 1300 133 143 / Photography, Floor plans, Copywriting, Video, Online Design / www.windthegap.com.au

Plans shown are only indicative of layout. Dimensions are approximate.

Alexandria, NSW
6/44-58 Belmont Street