



Rosebery, NSW
37/37 Morley Avenue

2 BED **2** BATH **1** CAR

CPS Property
passionately committed

STYLISH SPLIT-LEVEL TWO BEDROOM RESIDENCE IN 'METRO VILLAGE' SECURITY COMPLEX

Available: NOW

Initial Lease Period: 6 or 12 months

Inspect: Saturday 13 March from 12.40 - 12.55pm

Positioned on the third floor within a stylish security complex with lovely leafy outlooks, this sun-drenched North facing executive residence enjoys bright open plan interiors spanning across a generous 101 sqm split level floor plan boasting spectacular city views. This freshly painted two bedroom residence is conveniently situated just moments to vibrant local cafes, award-winning bars & eateries, boutique shopping, as well as a selection of nearby schools in addition to being a short stroll to Green Square Station & regular local bus services

LEASED

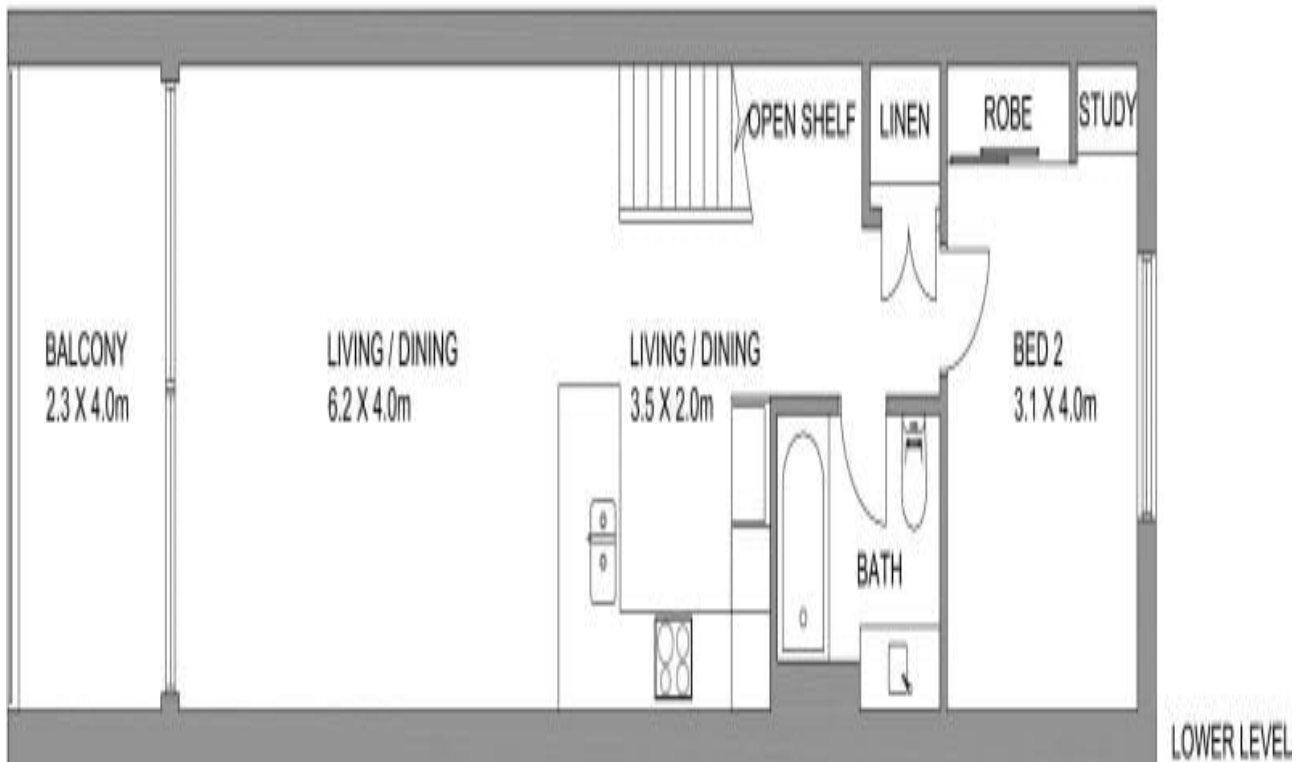
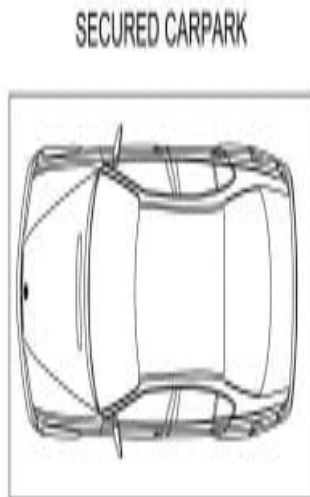
Contact: Alistair Roan
0488 556 634

Type: Apartment

Date Available: 08/03/2021

Bond: \$2600

<https://www.cpsproperty.com.au>



APPROX. INTERNAL : 101 SQM

TOTAL : 114 SQM

Plans shown are only indicative of layout. Dimensions are approximate.

Rosebery, NSW
37/37 Morley Avenue