



Maroubra, NSW
G03/1-3 Robey Street

1 BED **1** BATH **1** CAR

CPS Property
passionately committed

EXECUTIVE COURTYARD APARTMENT LOCATED IN THE HEART OF 'THE JUNCTION'

Available: NOW

Initial Lease Period: 6 or 12 months

Inspect: Saturday 5 December from 11.30 - 11.45am

Privately tucked away on the ground floor, this near new one bedroom residence boasts luxury inclusions throughout with light-filled open plan interiors & lovely courtyard outlooks. Showcasing an executive inner-city way of living in one of Maroubra's newest landmark developments of 68 luxury residences - Horizon Apartments. This stylish complex is conveniently situated just moments to buzzing local cafes, bars & eateries, Pacific Square, Westfield Eastgardens, UNSW, Prince of Wales Hospital, nearby parks & beaches as well as

LEASED

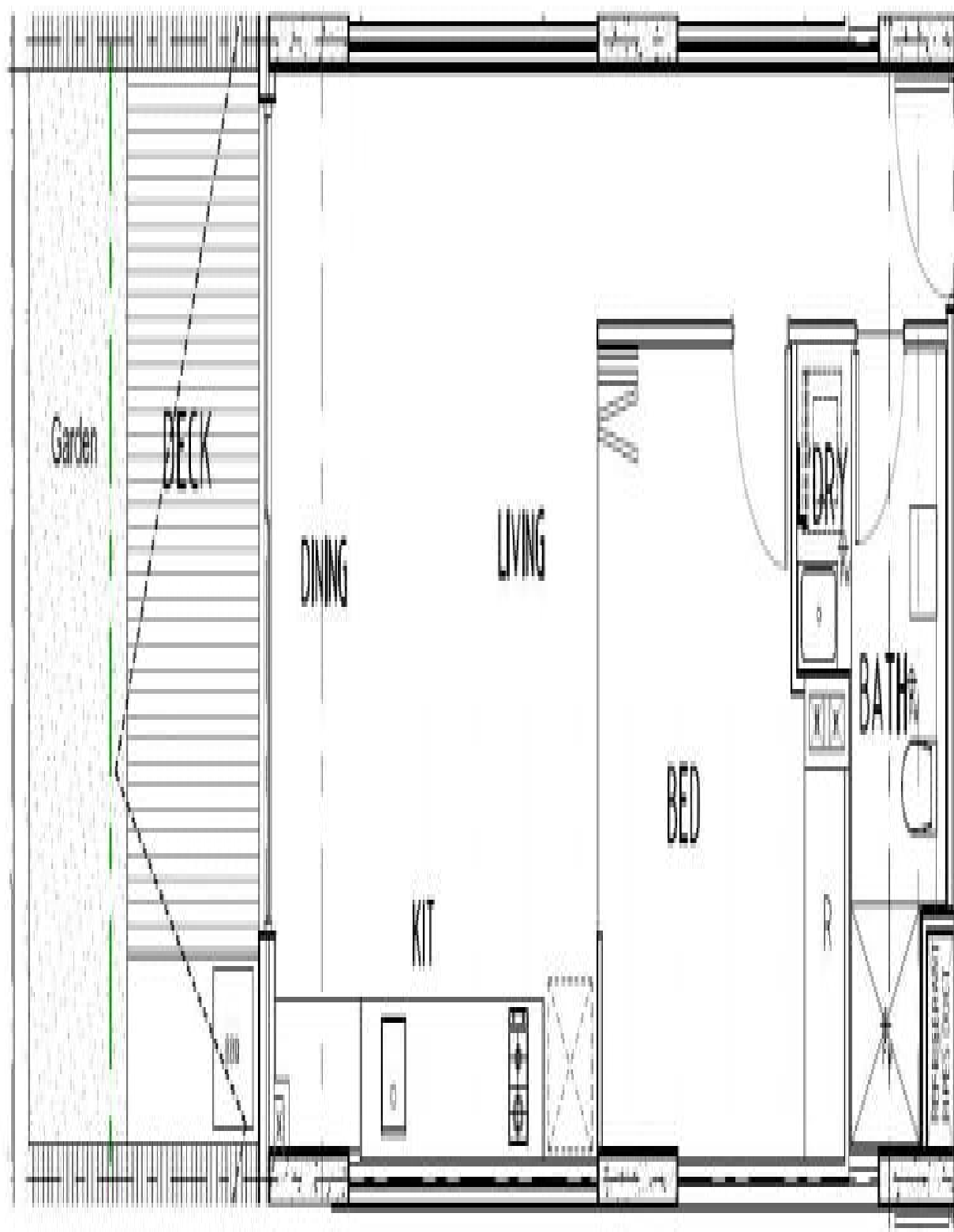
Contact: Alistair Roan
0488 556 634

Type: Apartment

Date Available: 24/10/2020

Bond: \$1800

<https://www.cpsproperty.com.au>



Plans shown are only indicative of layout. Dimensions are approximate.

Maroubra, NSW
G03/1-3 Robey Street