



Rosebery, NSW

309/5 Queen Street

1 BED **1** BATH **0** CAR



STYLISH BRIGHT ONE BEDROOM RESIDENCE IN RESORT STYLE COMPLEX

Available: 17 October 2018

Initial Lease Period: 6 or 12 months

Inspect: Wed 17th October - 5:30 to 6:00pm

Privately situated on the second floor of Rosebery's award winning 'Metro Village' complex, this stylish one bedroom residence enjoys a generous light-filled floorplan & boasts leafy northerly aspects. Showcasing an executive city fringe lifestyle & boasting resort-style facilities with tranquil landscaped gardens & sparkling lap pool, this low maintenance executive apartment is conveniently situated just moments to buzzing local cafes, vibrant bars & award-winning eateries, nearby shops including an IGA supermarket on

LEASED

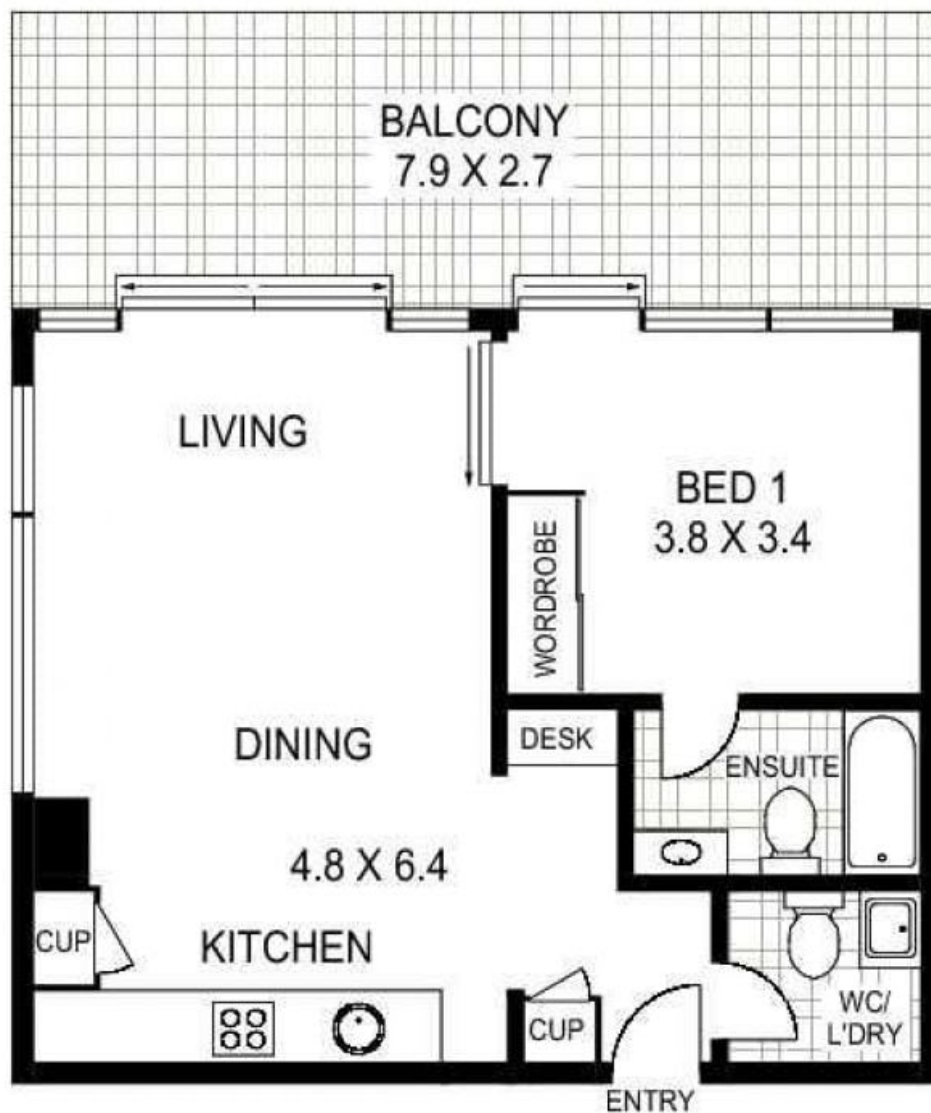
Contact: Alistair Roan
0488 556 634

Type: Apartment

Date Available: 17/10/2018

Bond: \$1960

<https://www.cpsproperty.com.au>



309/5 QUEEN STREET

ROSEBERY

APPROX : GROSS INTERNAL AREA :- 53 SQM

Floor Plan Disclaimer: Mind the Gap (mtg) floor plans / site plans are intended as a guide only. No representations or warranties of any nature whatsoever are given or intended and any person using this information should always rely on their own enquiries. mtg property marketing services - 1300 133 145 - photography, floor plans, virtual tours, video tours, copywriting, project marketing - www.mindthegap.com.au

Plans shown are only indicative of layout. Dimensions are approximate.

Rosebery, NSW
309/5 Queen Street