



**Newtown, NSW**  
305/88 King Street

**0** BED **1** BATH **1** CAR

**CPS Property**  
passionately committed

### NEW YORK LOFT STYLE APARTMENT IN LANDMARK CONVERSION

\*\*\* UNDER OFFER \*\*\*

Price: Offers from \$475,000

Inspect: By Appointment

### SOLD

Contact:

Shaun Ellis  
0419 291 073

Type:

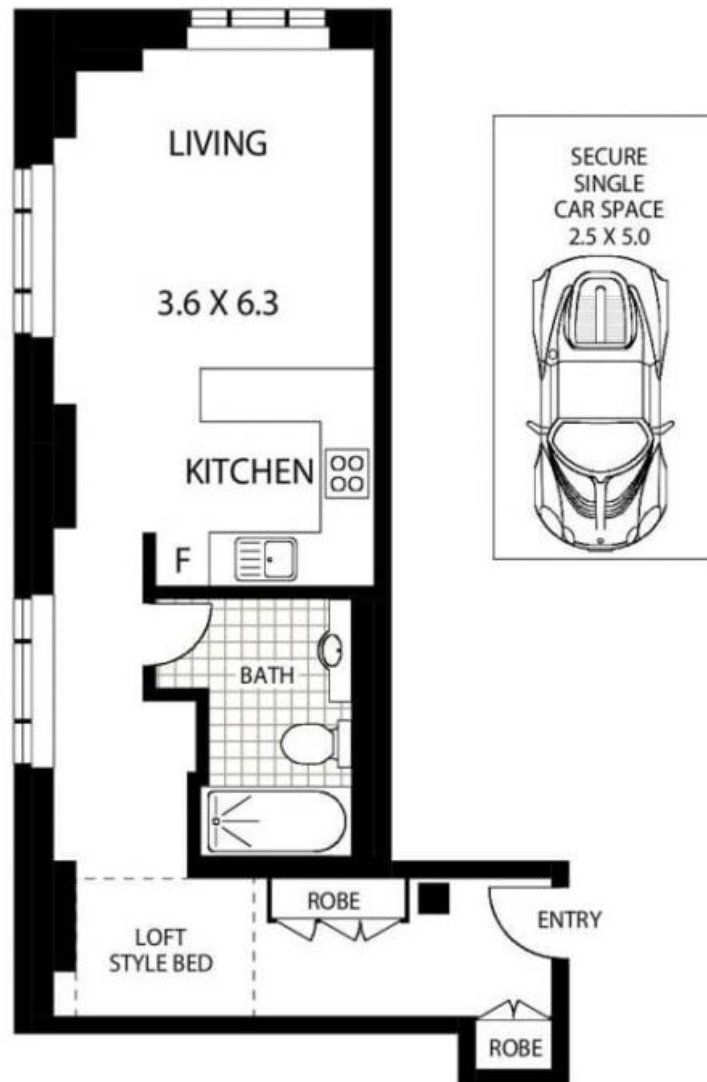
Studio

Sold Date:

15/12/2015

<https://www.cpsproperty.com.au>

Boasting a prized north-facing corner position, this sun drenched loft style studio is situated on the third floor of the landmark 'Georgina Apartments' and commands spectacular district & city skyline views. Elevated at the front of the prominent complex, this light filled retreat enjoys soaring loft ceilings & a cleverly configured floorplan. Enjoying an unrivaled location in the heart of vibrant King Street, this Inner City pad is found just moments to buzzing local cafes, eateries & nightlife, an abundance of boutique shopping, Sydney University, Royal Prince Alfred Hospital &



### LEVEL THREE APARTMENT

APPROX : TOTAL INTERNAL AREA :- 42 SQM  
APPROX: PARKING SPACE :- 11 SQM



**305/88 KING STREET**

**NEWTOWN**

**Floor Plan Disclaimer:** Mind the Gap (mtg) floor plans / site plans are intended as an approximate guide only. No representations or warranties of any nature are given or intended and any person using this information other than as a guide should always rely on their own enquiries. Mind the Gap property marketing services / 1300 133 143 / Photography, Floor plans, Copywriting, Video, Online, Design / [www.mindthegap.com.au](http://www.mindthegap.com.au)

Plans shown are only indicative of layout. Dimensions are approximate.

**Newtown, NSW**  
305/88 King Street