



Miranda, NSW
8 Woorak Crescent

3
BED

2
BATH

2
CAR

CPS Property
passionately committed

**SOLD PRIOR TO AUCTION
INSPECTION CANCELLED**

SOLD PRIOR TO AUCTION
INSPECTION CANCELLED

Perfectly positioned in a quiet family friendly street in Miranda's north, this single level home offers a great opportunity to obtain a low maintenance quality home in an extremely sought after park side location. This recently updated gem is an entertainer's dream, with modern interiors and open plan living space that flows onto an expansive covered deck. Settled in a desirable location within walking distance to nearby schools, Miranda & GyMEA train stations, as well as the recently refurbished Miranda Westfield.

SOLD

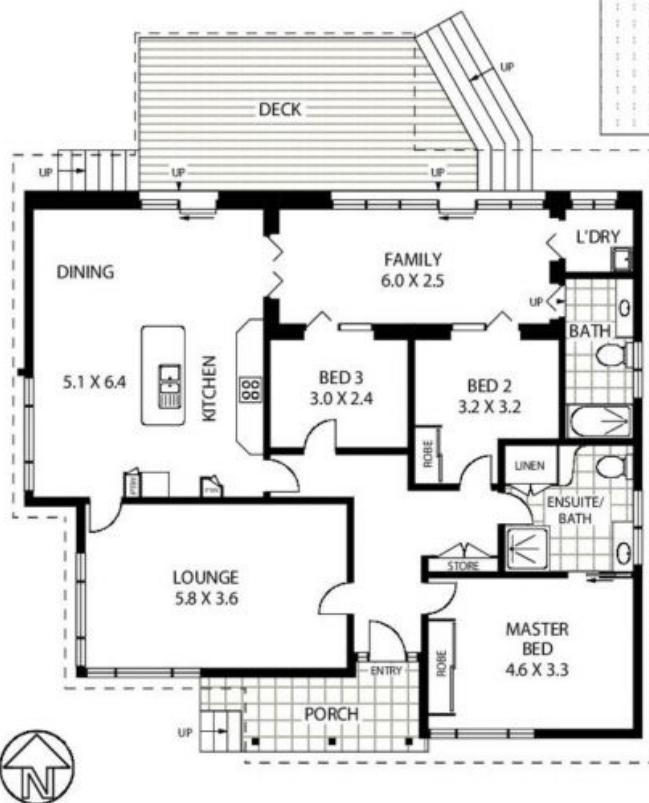
Contact: Shaun Ellis
0419 291 073

Type: House

Sold Date: 12/06/2015

Land: 556m2

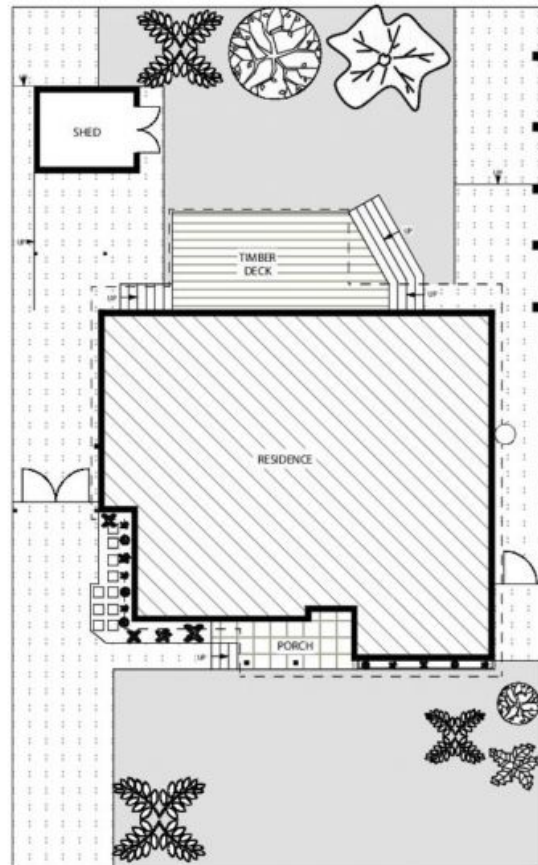
<https://www.cpsproperty.com.au>



8 WOORAK CRESCENT

MIRANDA

Floor Plan Disclaimer: Mind the Gap (mtg) floor plans / site plans are intended as an approximate guide only. No representations or warranties of any nature are given or intended and any person using this information other than as a guide should always rely on their own enquiries. Mind the Gap property marketing services / 1300 133 145 / Photography, Floor plans, Copywriting, Video, Online, Design / www.mindthegap.com.au



SITE PLAN

Plans shown are only indicative of layout. Dimensions are approximate.

Miranda, NSW
8 Woorak Crescent