



Erskineville, NSW

10/177 Mitchell Road

1 BED **1** BATH **1** CAR



NORTH facing Spacious one bedroom apartment overlooking pool and gardens - A MUST SEE.

Spanning 76sqm of in/outdoor living space this modern security apartment offers a spacious retreat enhanced by an elevated northerly aspect. It is peacefully tucked away just a short stroll from Sydney Park and Newtown shops, restaurants and trains.

- Excellent Yield for investor \$600 per week (fully furnished) or perfect for first home buyer to move in straight away.
- Overlooking the manicured grounds of Sydney Park Village
- A full length sheltered terrace extends generous interiors.

SOLD

Contact:

Jacob O'Neill
0403 042 525

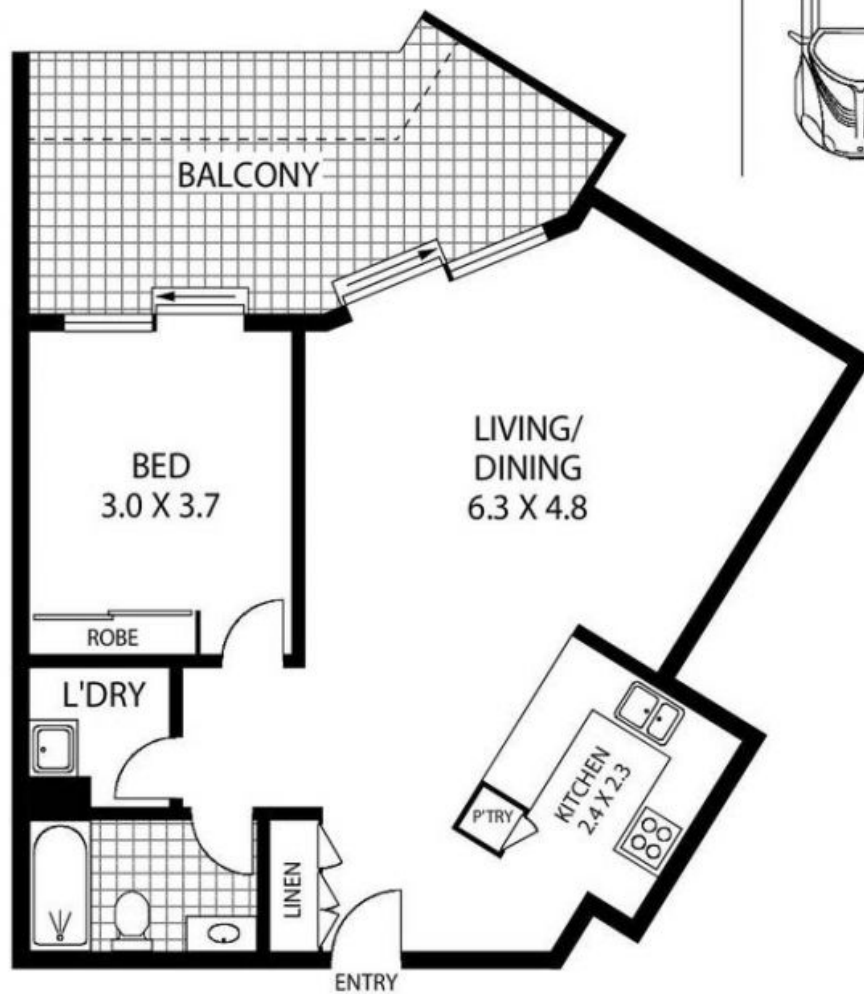
Type:

Apartment

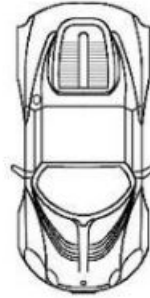
Sold Date:

24/10/2013

<https://www.cpsproperty.com.au>



SECURED
CAR SPACE
2.6 X 5.4



THIRD FLOOR



APPROX : INTERNAL AREA :- 60 SQM
APPROX : BALCONY AREA :- 17 SQM
APPROX : PARKING AREA :- 14 SQM

10310, 177-219 MITCHELL ROAD

ERSKINEVILLE

Floor Plan Disclaimer: Mind the Gap (mtg) floor plans / site plans are intended as an approximate guide only. No representations or warranties of any nature are given or intended and any person using this information other than as a guide should always rely on their own enquiries. Mind the Gap property marketing services / 1300 133 145 / Photography, Floor plans, Copywriting, Video, Online, Design / www.mindthegap.com.au

Plans shown are only indicative of layout. Dimensions are approximate.

Erskineville, NSW
10/177 Mitchell Road