



Sydney, NSW
5D/161 Kent Street

2 BED
2 BATH
1 CAR

CPS Property
passionately committed

DESIGNER APARTMENT

Available:

Perfectly positioned within the prestigious 'Stamford Marque' building, this generously sized 125sqm apartment has state of the art fixtures and finishes.

The building facilities include concierge, indoor swimming pool, sauna & gym.

- Huge marble kitchen with Smeg appliances
- Large living area opening to Harbour views
- Both bedrooms with BIRs & luxurious marble ensuites
- Main bedroom with private balcony

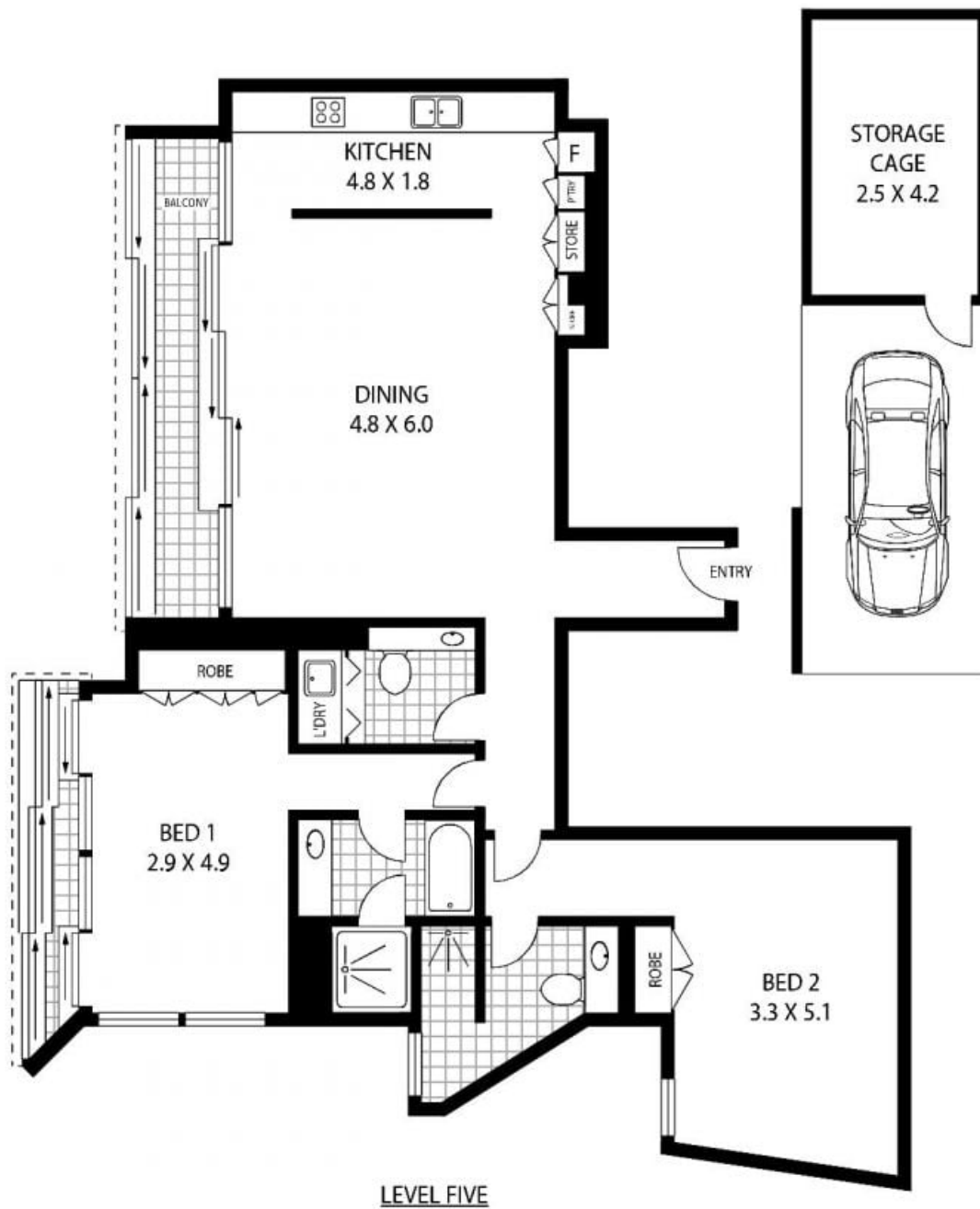
SOLD

Contact: Jacob O'Neill
0403 042 525

Type: Apartment

Sold Date: 24/11/2012

<https://www.cpsproperty.com.au>



5D/161 KENT STREET

SYDNEY

APPROX : INTERNAL AREA :- 125 SQM
 APPROX : CAR + STORAGE AREA :- 25 SQM

Floor Plan Disclaimer: Mind the Gap (mtg) floor plans / site plans are intended as an approximate guide only. No representations or warranties of any nature are given or intended and any person using this information other than as a guide should always rely on their own enquiries. Mind the Gap property marketing services / 1300 133 145 / Photography, Floor plans, Copywriting, Video, Online, Design / www.mindthegap.com.au

Plans shown are only indicative of layout. Dimensions are approximate.

Sydney, NSW
 5D/161 Kent Street