



Alexandria, NSW

38/58 Belmont Street

1
BED

1
BATH

1
CAR



TOP FLOOR 78m2 UNIT WITH PARK & CITY SKYLINE VIEWS

Perfectly positioned at the end of a cul-de-sac the tightly held NeoMetro building apartments are all north facing. This generously proportioned top floor one bedroom unit will impress.

- North facing & flooded with natural light
- 2 balconies with excellent cross flow ventilation
- Leafy aspect overlooking park with city skyline views
- Internal access to undercover parking
- Gas equipped kitchen with dishwasher, s/s appliances & granite benchtop
- Separate internal laundry
- Bedroom has mirrored built in robe

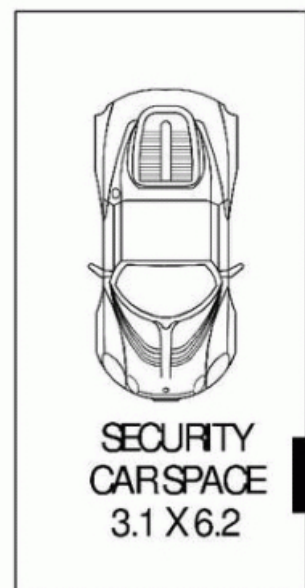
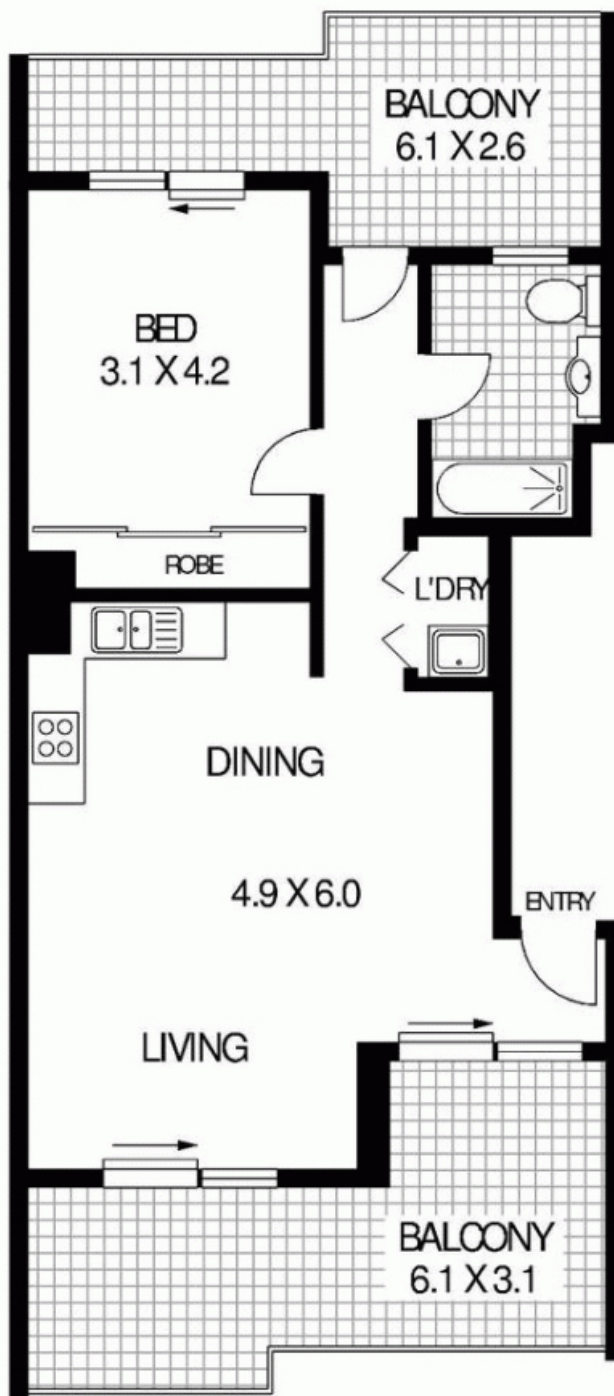
SOLD

Contact: Shaun Ellis
0419 291 073

Type: Unit

Sold Date: 11/10/2012

<https://www.cpsproperty.com.au>



SECURITY
CAR SPACE
3.1 X 6.2

BASEMENT



TOP FLOOR
APARTMENT

APPROX : INTERNAL AREA :- 52 SQM
APPROX : EXTERNAL AREA :- 45 SQM
APPROX : TOTAL AREA :- 97 SQM

38/58 BELMONT STREET

ALEXANDRIA

Floor Plan Disclaimer: Mind the Gap (mtg) floor plans / site plans are intended as an approximate guide only. No representations or warranties of any nature are given or intended and any person using this information other than as a guide should always rely on their own enquiries. Mind the Gap property marketing services / 1300 133 145 / Photography, Floor plans, Copywriting, Video, Online, Design / www.mindthegap.com.au

Plans shown are only indicative of layout. Dimensions are approximate.

Alexandria, NSW
38/58 Belmont Street