



## Alexandria, NSW

6/58 Belmont Street

**2** BED **2** BATH **2** CAR



### SOLD - SATURDAY 8th Sept Inspection CANCELLED

Perfectly positioned at the end of a cul-de-sac the tightly held NeoMetro building apartments are all north facing. This generously proportioned two bedroom unit will impress.

- North facing & flooded with natural light
- 2 courtyards with excellent cross flow ventilation
- Private entrance directly from the street, opposite a park
- Internal access to tandem undercover parking
- Gas equipped kitchen with dishwasher & gas cooking
- Separate internal laundry with dryer
- Both bedrooms with mirrored BIR's, main with ensuite
- Bathroom has continuous gas hot water and includes a bathtub
- Pet friendly building

### SOLD

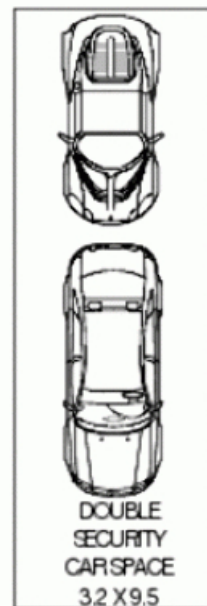
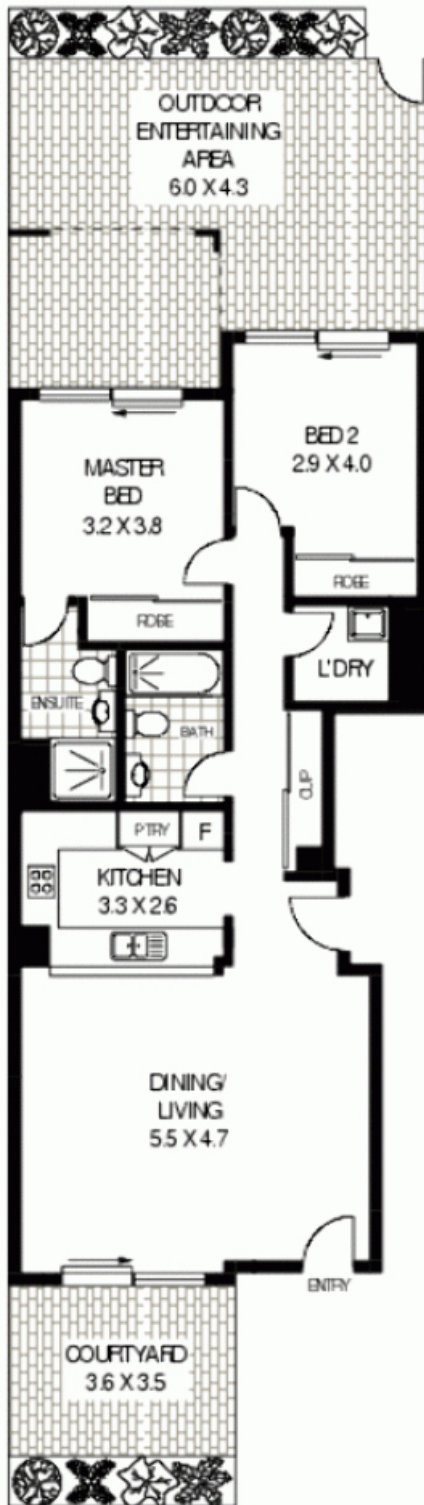
**Contact:** Shaun Ellis  
0419 291 073

**Type:** Apartment

**Sold Date:** 04/09/2012

**Land:** 119m2

<https://www.cpsproperty.com.au>



APPROX : GROSS INTERNAL AREA : 79 SQM



GROUND FLOOR

6/58 BELMONT STREET

ALEXANDRIA

**Floor Plan Disclaimer:** Mind the Gap (nig) floor plans / site plans are intended as an approximate guide only. No representation or warranties of any nature are given or intended and any person using this information other than as a guide should do so at their own risk. Mind the Gap property marketing services / 1300 130 145 / Photography, Floor plans, Copywriting, Video, Online Design / [www.mindthegap.com.au](http://www.mindthegap.com.au)

Plans shown are only indicative of layout. Dimensions are approximate.

**Alexandria, NSW**  
6/58 Belmont Street