



Alexandria, NSW

46/58 Belmont St

1 BED **1** BATH **0** CAR



TOP FLOOR 76m2 UNIT WITH CITY SKYLINE VIEWS

Perfectly positioned on the top floor of the tightly held NeoMetro building, this over sized one bedroom unit will impress.

- North facing & flooded with natural light
- 2 balconies with excellent cross flow ventilation
- Study nook and ample storage
- Huge entertainer's balcony leading off the lounge overlooking the leafy common courtyard and facing the city
- Kitchen with dishwasher & gas cooking
- Separate internal laundry with dryer
- Large bedroom with mirrored BIRs and a/con.
- Bathroom has continuous gas hot water and includes a bathtub
- Pet friendly building

SOLD

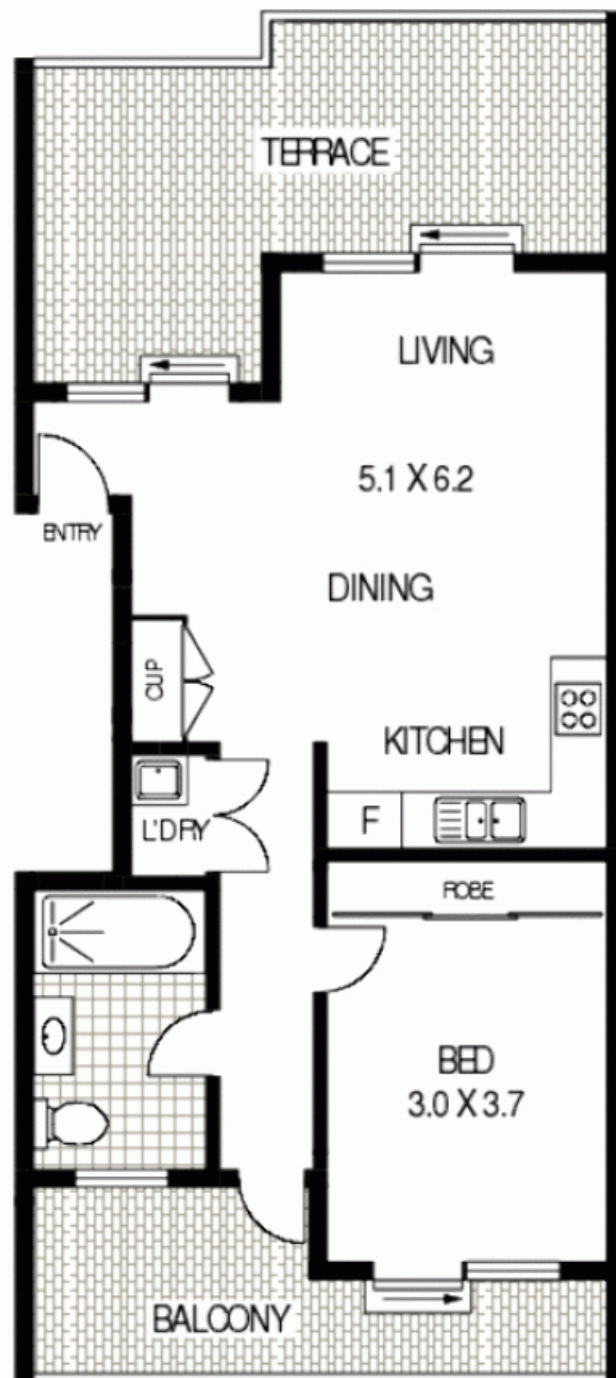
Contact: Jacob O'Neill
0403 042 525

Type: Apartment

Sold Date: 27/04/2012

Land: 76m2

<https://www.cpsproperty.com.au>



SECOND FLOOR

* APPROX : GROSS INTERNAL AREA : 54 SQM



46/48-50 BELMONT STREET

ALEXANDRIA

Floor Plan Disclaimer: Mind the Gap (mtg) floor plans / site plans are intended as an approximate guide only. No representations or warranties of any nature are given or intended and any person using this information other than as a guide should always rely on their own enquiries. mtg property marketing services - 1300 133 145 - photography, floor plans, copywriting, video, design, projects - www.mindthegap.com.au

Plans shown are only indicative of layout. Dimensions are approximate.

Alexandria, NSW
46/58 Belmont St