



Sydney, NSW
4108/91 Liverpool St

1
BED

1
BATH

1
CAR

CPS Property
passionately committed

SPECTACULAR VIEWS TO BLUE MOUNTAINS

Located within the prestigious World Tower, this 1 bedroom + study apartment is flooded with natural sunlight and has sweeping views over Darling Harbour and Anzac Bridge.

- â€¢ West facing with enclosed entertainer's balcony
- â€¢ Located on the 41st level
- â€¢ Generous study area (can be used as second lounge)
- â€¢ Security car park & storage cage
- â€¢ Audio & Visual Intercom
- â€¢ Ducted air conditioning
- â€¢ Stand alone shower and bath
- â€¢ Fully tiled bathroom (to ceiling)
- â€¢ Stone bench tops in kitchen

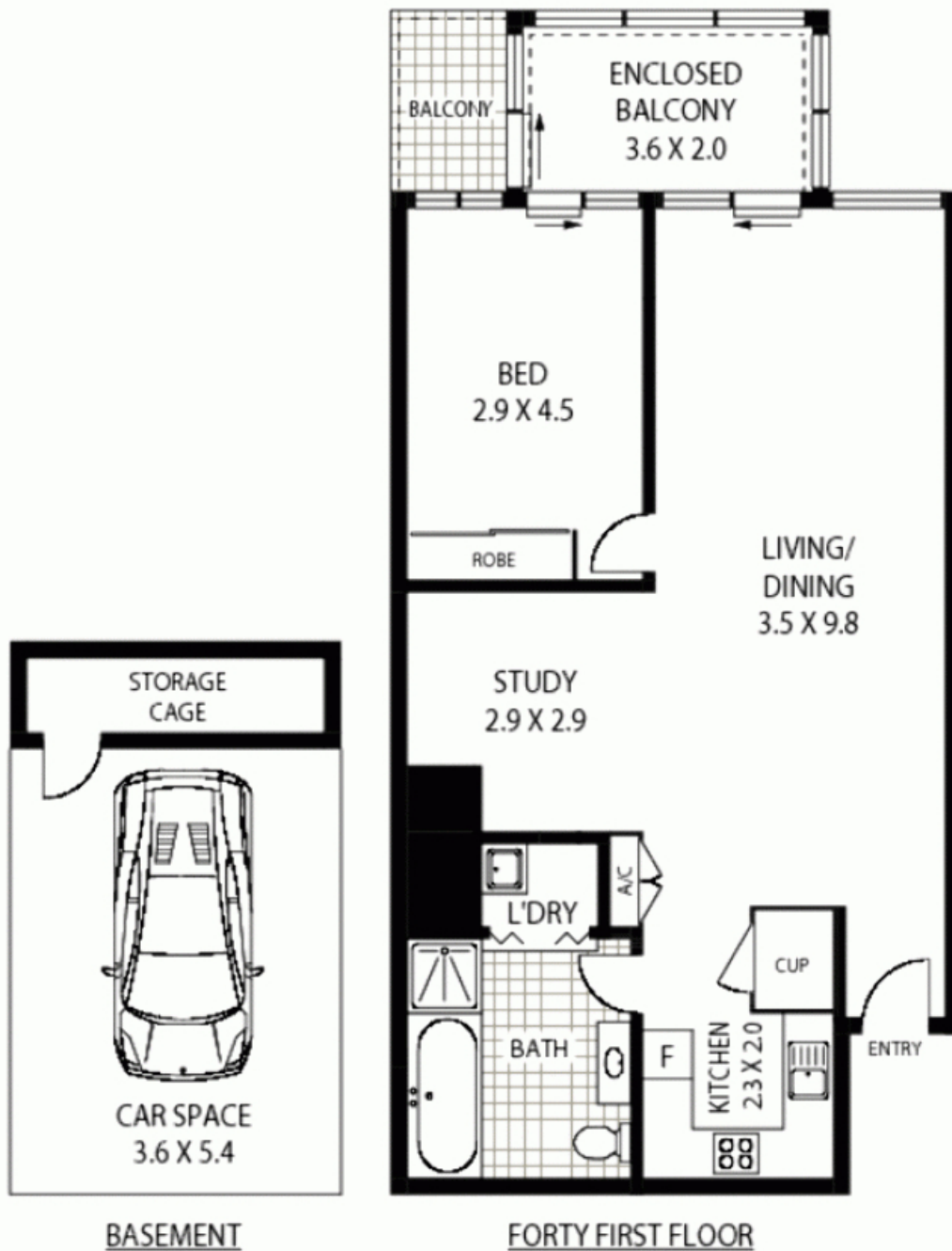
SOLD

Contact: Jacob O'Neill
0403 042 525

Type: Apartment

Sold Date: 20/02/2012

<https://www.cpsproperty.com.au>



4108/91 LIVERPOOL STREET

SYDNEY

Floor Plan Disclaimer: *Mind the Gap (mtg) floor plans / site plans are intended as an approximate guide only. No representations or warranties of any nature are given or intended and any person using this information other than as a guide should always rely on their own enquiries. mtg property marketing services*
 • 1300 123 145 • photography, floor plans, copywriting, video, design, projects • www.mtgproperty.com.au

- APPROX : GROSS INTERNAL AREA :- 81 SQM
- APPROX : GROSS GARAGE AREA :- 25 SQM
- APPROX : GROSS BALCONY AREA :- 3 SQM

Plans shown are only indicative of layout. Dimensions are approximate.

Sydney, NSW
 4108/91 Liverpool St