

## Surry Hills, NSW

302/38-52 Waterloo St

1  
BED

1  
BATH

1  
CAR



**CPS Property**  
passionately committed

### NORTH FACING WITH CITY SKYLINE VIEWS

Located within the prestigious De Node building, this near new 1 bedroom apartment is flooded with natural sunlight and faces the city.

- â€¢ North facing with huge entertainer's balcony
- â€¢ Located on the 3rd level
- â€¢ Floorboards throughout
- â€¢ Full security car park & storage cage
- â€¢ Audio & Visual Intercom
- â€¢ Ducted air conditioning + ceiling fans
- â€¢ Fully wired for internet + foxtel
- â€¢ Separate laundry with a clothes dryer
- â€¢ Stand alone shower
- â€¢ Fully tiled bathroom (to ceiling)

### SOLD

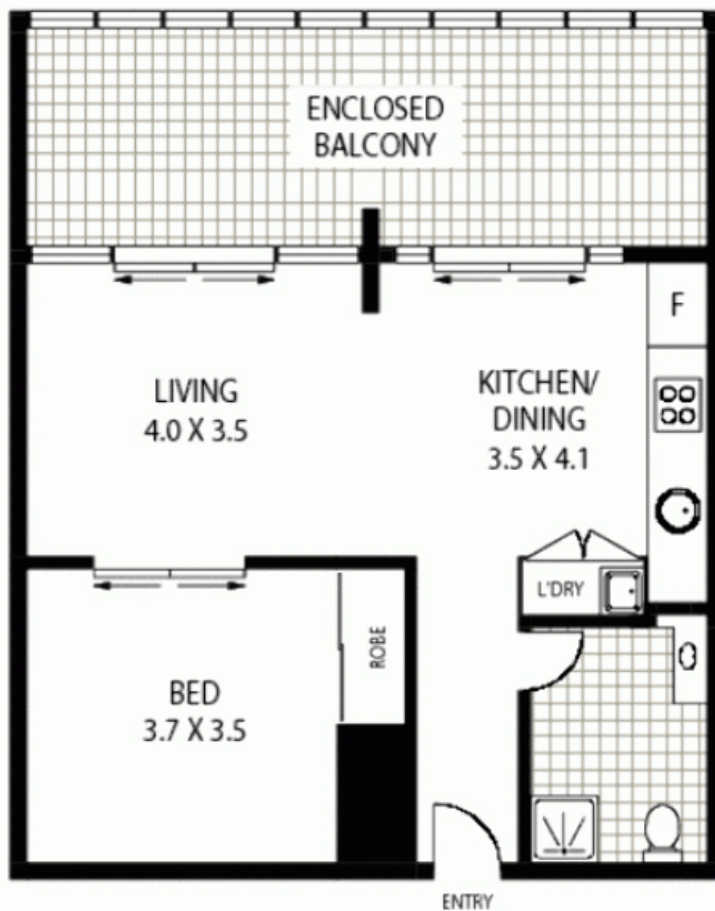
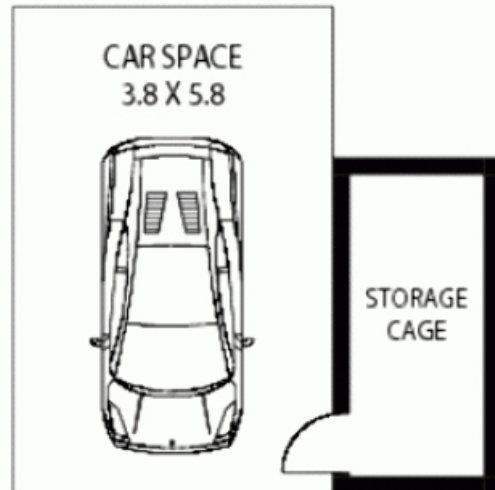
**Contact:** Jacob O'Neill  
0403 042 525

**Type:** Apartment

**Sold Date:** 30/11/2011

**Land:** 79m2

<https://www.cpsproperty.com.au>



### THIRD FLOOR

302/38-52 WATERLOO STREET

SURRY HILLS

**Floor Plan Disclaimer:** Mind the Gap (mtg) floor plans / site plans are intended as an approximate guide only. No representations or warranties of any nature are given or intended and any person using this information other than as a guide should always rely on their own enquiries. mtg property marketing services - 1300 133 745 - photography, floor plans, copywriting, video, design, projects - [www.mindthegap.com.au](http://www.mindthegap.com.au)

- APPROX : GROSS INTERNAL AREA :- 58 SQM
- APPROX : BALCONY AREA :- 21 SQM
- APPROX : CAR SPACE & STORAGE AREA :- 28 SQM

Plans shown are only indicative of layout. Dimensions are approximate.

**Surry Hills, NSW**  
302/38-52 Waterloo St