



**Greenwich, NSW**  
14/214-216 Pacific Hwy

**1**  
BED

**1**  
BATH

**1**  
CAR

**CPS Property**  
passionately committed

### TOP FLOOR APARTMENT WITH NORTH EAST ASPECT

### SOLD

OPEN FOR INSPECTION SAT 29TH OCT; 11 - 11:30AM.

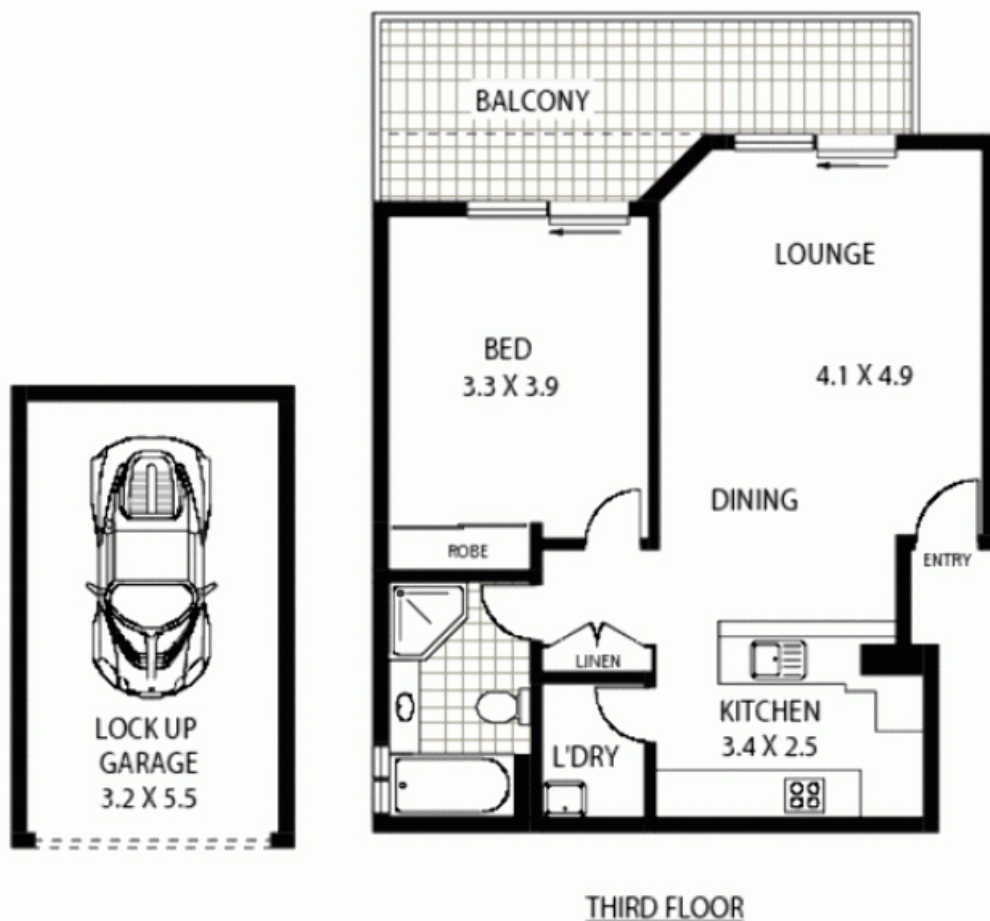
**Contact:** Jacob O'Neill  
0403 042 525

Positioned on the top floor of the Ridgeview building, this 75sqm apartment is flooded with natural sunlight.

**Type:** Apartment  
**Sold Date:** 02/11/2011  
**Land:** 93m2

<https://www.cpsproperty.com.au>

- Bright open plan living
- Spacious bedroom with mirrored built-ins
- North East facing balcony with leafy outlook
- Reverse cycle air-conditioning
- High ceilings
- Kitchen with dishwasher, s/s appliances & cook top
- Bathroom with shower & bath
- Secure Building, intercom access, internal alarm system



**14/214-216 PACIFIC HIGHWAY**

**GREENWICH**

**Floor Plan Disclaimer:** Mind the Gap (mtg) floor plans / site plans are intended as an approximate guide only. No representations or warranties of any nature are given or intended and any person using this information other than as a guide should always rely on their own enquiries. mtg property marketing services - 1300 133 745 - photography, floor plans, copywriting, video, design, projects - [www.mindthegap.com.au](http://www.mindthegap.com.au)

- APPROX : GROSS INTERNAL AREA :- 58 SQM
- APPROX : GARAGE AREA :- 18 SQM
- APPROX : BALCONY AREA :- 17 SQM

Plans shown are only indicative of layout. Dimensions are approximate.

**Greenwich, NSW**  
14/214-216 Pacific Hwy