

Roseville, NSW
24/5-17 Pacific Hwy

1 BED **1** BATH **1** CAR

CPS Property
passionately committed

PERFECT FIRST HOME OR INVESTMENT

UNDER OFFER.

Positioned on the Boundary Street side of complex, this two level North facing apartment is flooded with natural sunlight. The property is surprisingly quiet and occupies the top two floors of the building.

- Bright open plan living
- North facing balcony with leafy outlook
- Kitchen with dishwasher, s/s appliances and breakfast bar
- Spacious bedroom upstairs with mirrored built-ins
- Bathroom with bath & shower, separate wc
- Secure parking space plus visitor parking
- 13kms from Sydney CBD

SOLD

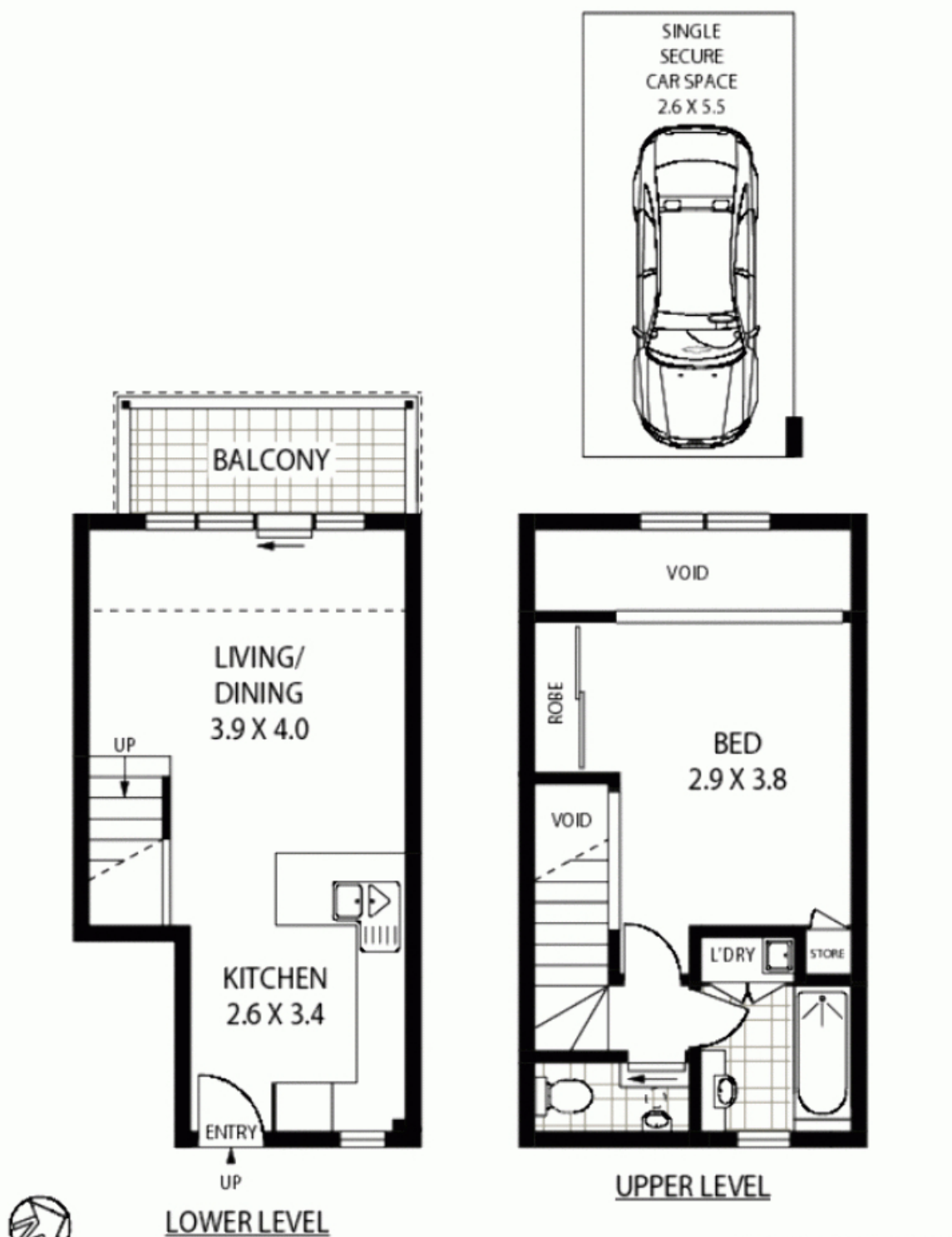
Contact: Jacob O'Neill
0403 042 525

Type: Apartment

Sold Date: 05/07/2011

Land: 68m2

<https://www.cpsproperty.com.au>



24/5-17 PACIFIC HIGHWAY

ROSEVILLE

APPROX : INTERNAL AREA : ~ 54 SQM
APPROX : EXTERNAL AREA : ~ 4 SQM
APPROX : CAR SPACE : ~ 14 SQM

Floor Plan Disclaimer: Mind the Gap (mtg) floor plans / site plans are intended as an approximate guide only. No representations or warranties of any nature are given or intended and any person using this information other than as a guide should always rely on their own enquiries. Mind the Gap property marketing services / 1300 133 140 / Photography, Floor plans, Copywriting, Video, Design / www.mindthegap.com.au

Plans shown are only indicative of layout. Dimensions are approximate.

Roseville, NSW
24/5-17 Pacific Hwy