



Redfern, NSW
103/1 Marian St

1
BED

1
BATH

1
CAR

CPS Property
passionately committed

STYLISH WAREHOUSE CONVERSION

Open for inspection Sat 21st May; 10 - 10:30am.

Set within the renowned and tightly held Watertower building, this fully renovated New York style warehouse apartment features a massive 67sqm of living area with a leafy NORTH outlook.

- > Massive open plan living with an abundance of natural light
- > Exposed beams with timber floors
- > Large galley kitchen with s/s appliances
- > Large bedroom with BIRs
- > 25sqm storage space under the unit
- > Secure underground parking
- > Library

SOLD

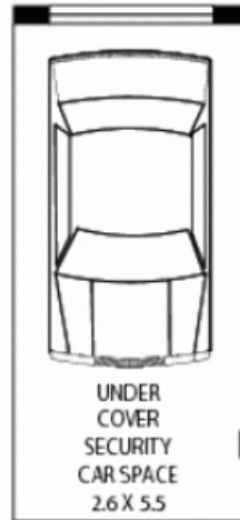
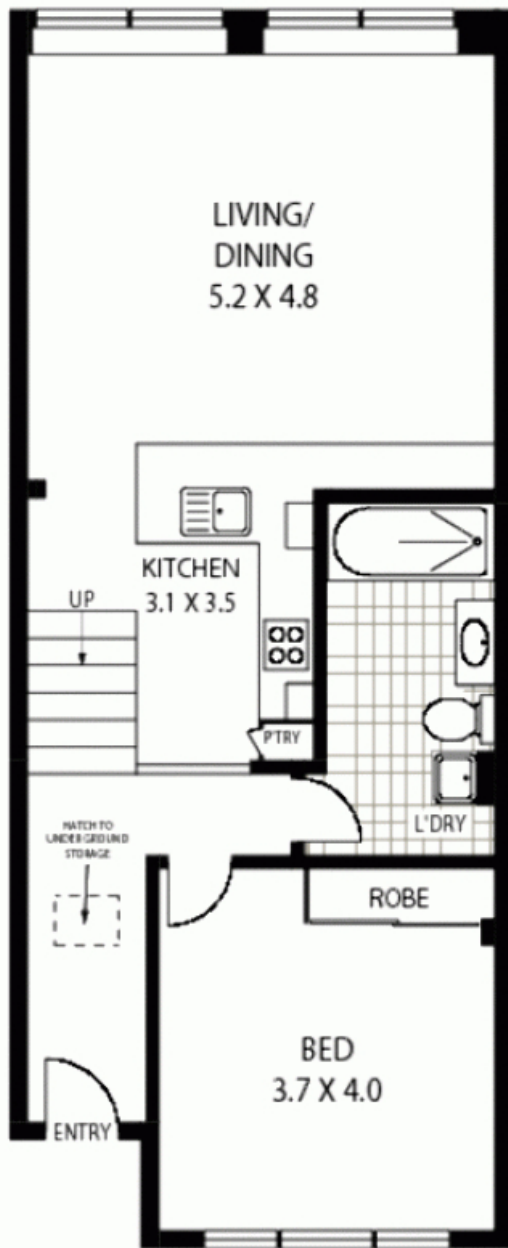
Contact: Jacob O'Neill
0403 042 525

Type: Apartment

Sold Date: 21/06/2011

Land: 67m2

<https://www.cpsproperty.com.au>



LEVEL ONE

NOTE : SUBSTANTIAL UNDERGROUND STORAGE



103/1 MARIAN STREET

REDFERN

Floor Plan Disclaimer: Mind the Gap (mtg) floor plans / site plans are intended as an approximate guide only. No representations or warranties of any nature are given or intended and any person using this information other than as a guide should always rely on their own enquiries. mtg property marketing services - 1300 133 145 - photography, floor plans, copywriting, video, design, projects - www.mtgproperty.com.au

- APPROX : GROSS INTERNAL AREA : 67 SQM
- APPROX : PARKING AREA : 14 SQM
- APPROX : UNDERGROUND STORAGE SPACE : 25 SQM

Plans shown are only indicative of layout. Dimensions are approximate.

Redfern, NSW
103/1 Marian St