



Parramatta, NSW
86/18 Sorrell St

2 BED **1** BATH **1** CAR

CPS Property
passionately committed

A PERFECT ENTRY INTO THE MARKET

Located in the Overthorpe Building, this modern 2 bedroom apartment is positioned in the heart of Parramatta and only a short stroll to the river.

- â€¢ Positioned on Level 2 overlooking the Pool
- â€¢ Building is 9 years old and has 6 levels in total
- â€¢ Enjoys a North East aspect
- â€¢ Large gourmet kitchen with gas cooking and granite benchtops
- â€¢ Two double bedrooms with built-in robes
- â€¢ Complex has double security at gate and building entrance
- â€¢ Air Conditioning
- â€¢ Security car space
- â€¢ Outdoor swimming pool surrounded by garden courtyard
- â€¢ Rose & Garden Hotel on the corner of street (50m away)

SOLD

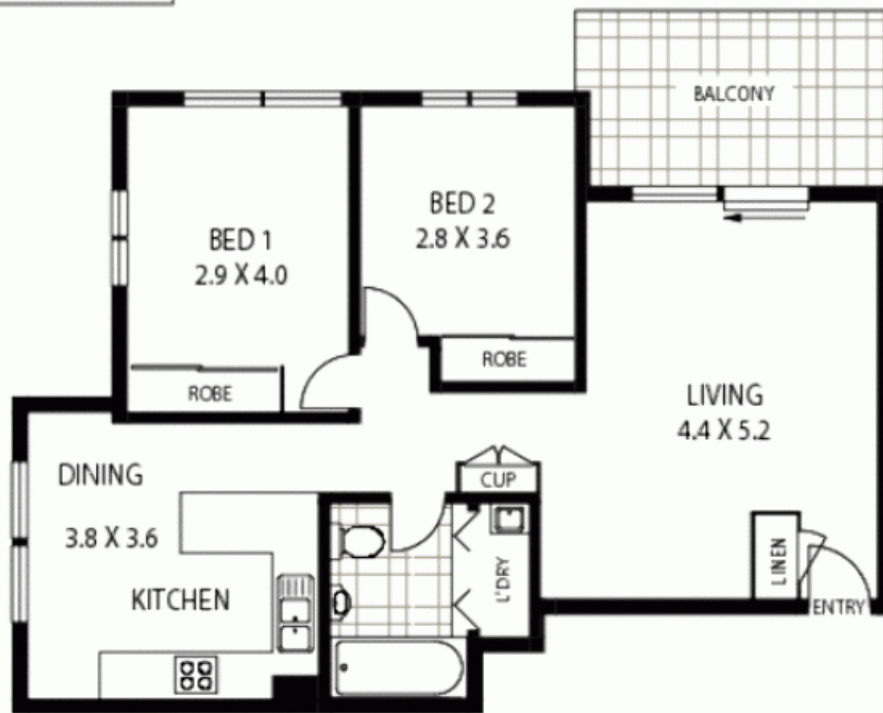
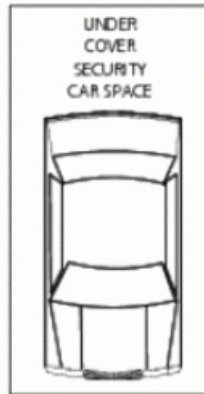
Contact: Jacob O'Neill
0403 042 525

Type: Apartment

Sold Date: 19/11/2010

Land: 94m2

<https://www.cpsproperty.com.au>



LEVEL TWO



86/18 SORRELL ROAD

PARRAMATTA

• APPROX: GROSS INTERNAL AREA: ~ 78 SQM

*Disclaimer: mtg - mind the gap floor plans & site plans are intended as a guide only. Individuals should always rely on their own enquiries for exact measurements and no warranties are intended or given. Please Note: Any internal area measurement total that may be included does not include any void spaces or recesses. Any external area measurement total that may be included does not include the total site plan area (ie total grounds and garden areas). mtg - mind the gap - 1 300 133 145 - www.mindthegap.com.au

Plans shown are only indicative of layout. Dimensions are approximate.

Parramatta, NSW
86/18 Sorrell St