

Rosebery, NSW

307/5 Queen St

1 BED **1** BATH **0** CAR

CPS Property
passionately committed

1 BED APARTMENT WITH CITY VIEWS

Located on Queen St, off Botany Rd. Queen St runs between Morley Ave & Cressy St.

If you're hungry for value then look no further. This private one bedroom apartment with balcony has everything you need to start your dream.

Combined living and dining area leading to a 20sqm balcony, perfect for the entertainer. The kitchen has plenty of cupboard space and comes with a dishwasher whilst the bathroom includes glass framed bath/shower.

The main bedroom has mirrored built-ins with plenty of space for both his and hers.

SOLD

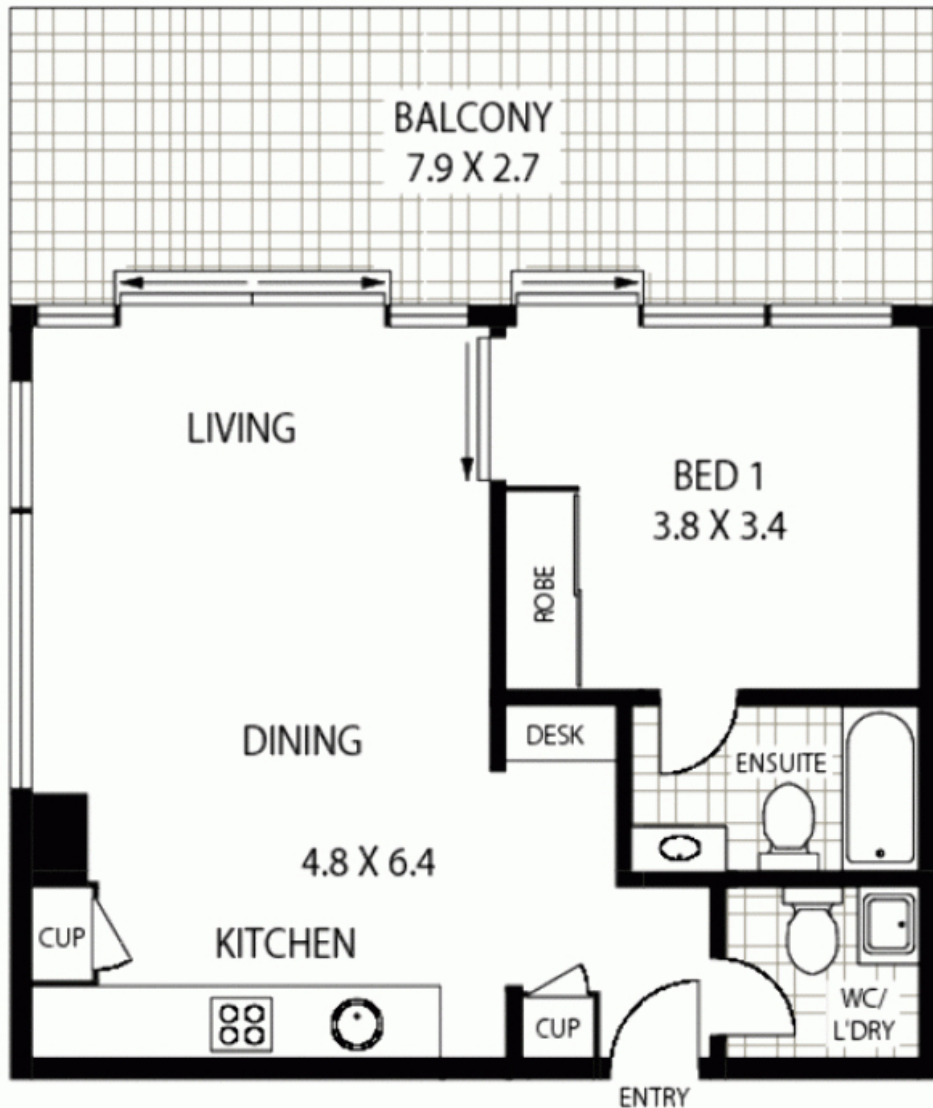
Contact: Jacob O'Neill
0403 042 525

Type: Apartment

Sold Date: 09/03/2010

Land: 53m2

<https://www.cpsproperty.com.au>



307/5 QUEEN STREET

ROSEBERY

***Disclaimer:** mtg - mind the gap floor plans & site plans are intended as a guide only. Individuals **should always** rely on their own enquiries for exact measurements and no warranties are intended or given. **Please Note:** Any internal area measurement total that may be included does not include any void spaces or recesses. Any external area measurement total that may be included does not include the total site plan area (ie total grounds and garden areas). mtg - mind the gap - 1 300 133 145 - www.mindthegap.com.au

* APPROX : GROSS INTERNAL AREA :- 53 SQM

Plans shown are only indicative of layout. Dimensions are approximate.

Rosebery, NSW
307/5 Queen St