

Waterloo, NSW
173/806 Bourke St

1 BED **1** BATH **0** CAR

CPS Property
passionately committed

GREAT FIRST HOME OR INVESTMENT

Be the first to secure this ONE BEDROOM LUXURY APARTMENT. Featuring resort style living within walking distance to Moore Park Golf Course and Surry Hills village. This apartment offers 1 bedroom with built-ins which opens up to a private balcony area. The combined lounge/dining area also opens onto balcony area. The apartment has a modern kitchen with dishwasher, spacious bathroom and laundry with dryer.

Property Financials include:

- Rental Return \$1560 p/m
- Strata Levies \$630 p/q
- Council Rates \$163 p/q
- Water \$133 p/q

SOLD

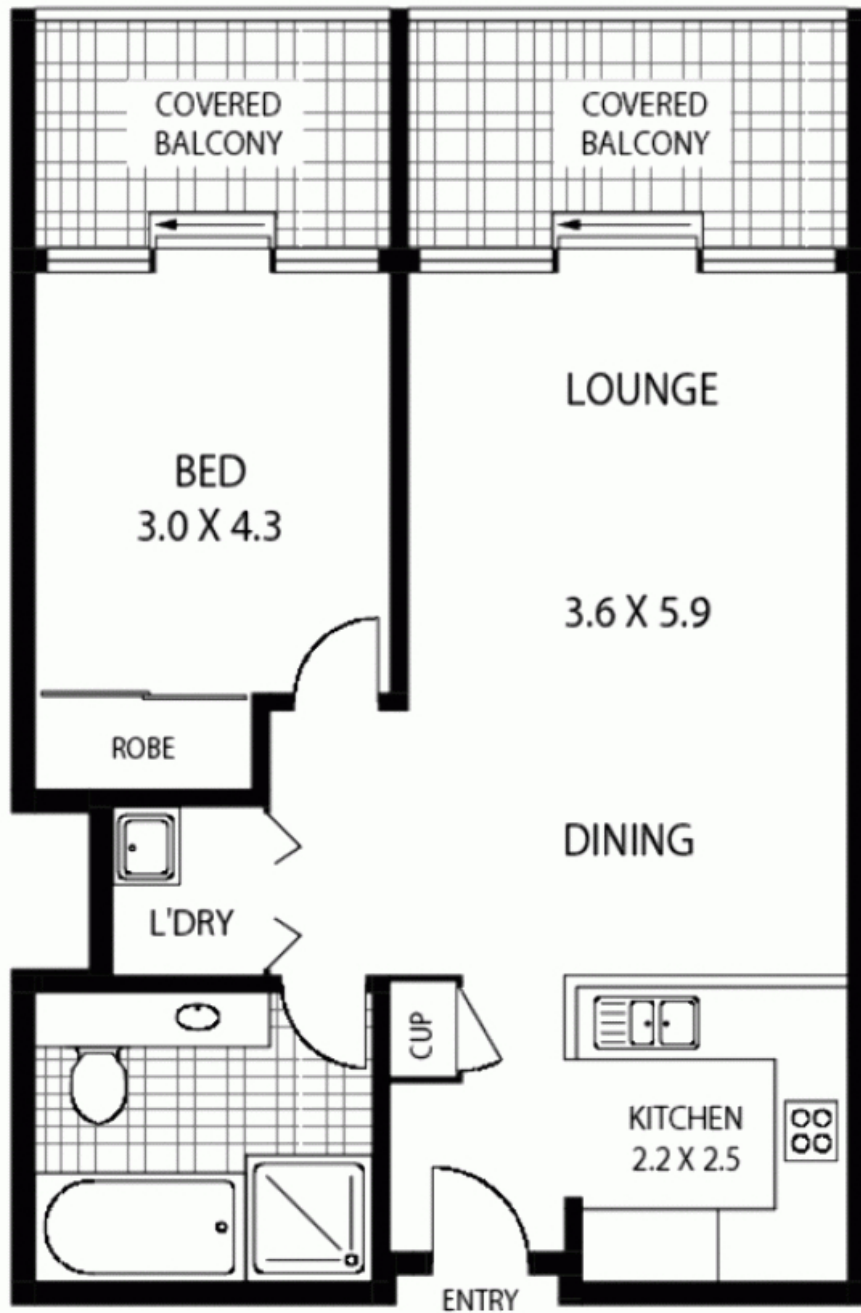
Contact:

Type: Apartment

Sold Date: 06/07/2009

Land: 65m2

<https://www.cpsproperty.com.au>



LEVEL TWO

TOTAL INTERNAL AREA :- 65.5QM



173/806 BOURKE STREET

WATERLOO

Floor Plan Disclaimer: Mind the Gap (mtg) floor plans / site plans are intended as a guide only. No representations or warranties of any nature whatsoever are given or intended and any person using this information should always rely on their own enquiries. mtg property marketing services - 1300 133 145 - photography, floor plans, virtual tours, video tours, copywriting, project marketing - www.mindthegap.com.au

Plans shown are only indicative of layout. Dimensions are approximate.

Waterloo, NSW
173/806 Bourke St