



**Zetland, NSW**  
12/6 Defries Avenue

**1** BED **1** BATH **1** CAR

**CPS Property**  
passionately committed

**MODERN ONE BEDROOM PLUS STUDY IN GREAT LOCATION**  
**OPEN FOR INSPECTION: BY APPOINTMENT**

Available: 5 December 2014  
Initial Lease Period: 6 or 12 months  
Inspect: By Appointment

**LEASED**

**Contact:** Jacob O'Neill  
0403 042 525

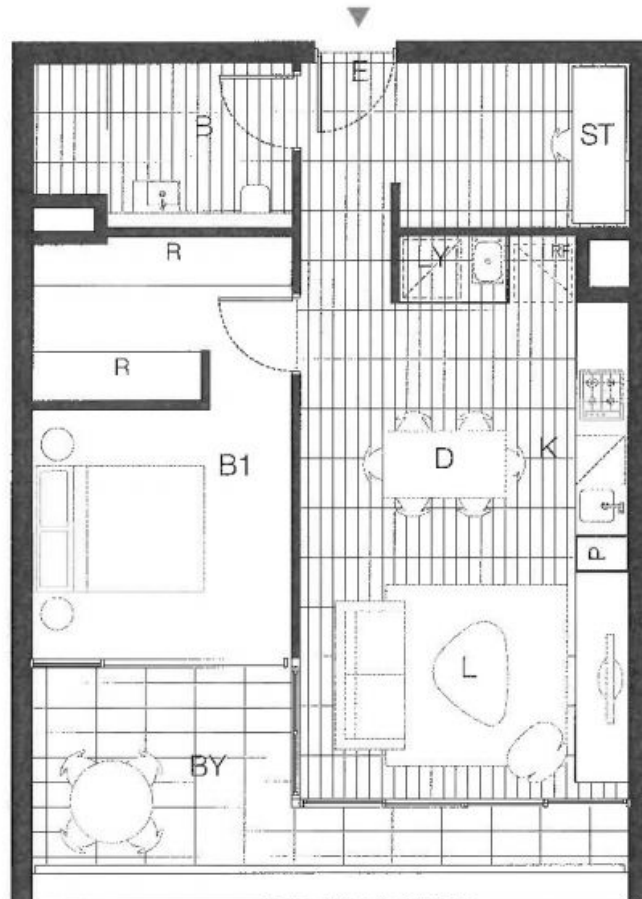
**Type:** Apartment

**Date Available:** 05/12/2014

**<https://www.cpsproperty.com.au>**

Located on level 3, this near new 1 bedroom plus study in the Apex building is guaranteed to impress. In addition to underground parking, this apartment features combined living/dining area with a balcony spanning the living and bedroom areas, stone kitchen bench tops with Smeg appliances including gas cooking. Modern bathroom and concealed laundry completes the package of this fantastic apartment.

**APEX** WHERE LIFE MEETS STYLE  
**Apt 304** 1 Bed  
 Internal Area 58sqm  
 External Area 11sqm  
 Total Area 69sqm

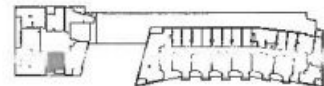


**Legend:**

B Bathroom BY Balcony D Dining EN Ensuite L Living Room P Pantry S Store TCE Terrace  
 B1,2 Bedroom 1, 2 CY Courtyard E Entry K Kitchen LY Laundry R Wardrobe ST Study WIR Walk-in Robe



rev\_1 08/01/2016



Disclaimer: This floor plan has been prepared for marketing purposes only. All descriptions, dimensions, depictions and other details in this floor plan may not be to scale and may vary to the property as built. No third party has any authority to make or give any representation or warranty in relation to the property. Your attention is drawn to the special conditions of the contract for sale.

Plans shown are only indicative of layout. Dimensions are approximate.

**Zetland, NSW**  
 12/6 Defries Avenue