



**Alexandria, NSW**  
15/58 Belmont Street

**2** BED **1** BATH **2** CAR

**CPS Property**  
passionately committed

**142 SQM GROUND FLOOR PET FRIENDLY  
CONTEMPORARY APARTMENT WITH 2 COURTYARDS  
- OPEN FOR INSPECTION: SAT 11 OCTOBER - 12:15  
TO 12:30PM**

Available: 18th October 2014

Initial Lease Period: 12 months

Inspect: Sat 11 October - 12:15 to 12:30pm

**LEASED**

**Contact:** Shaun Ellis  
0419 291 073

**Type:** Apartment

**Date Available:** 17/10/2014

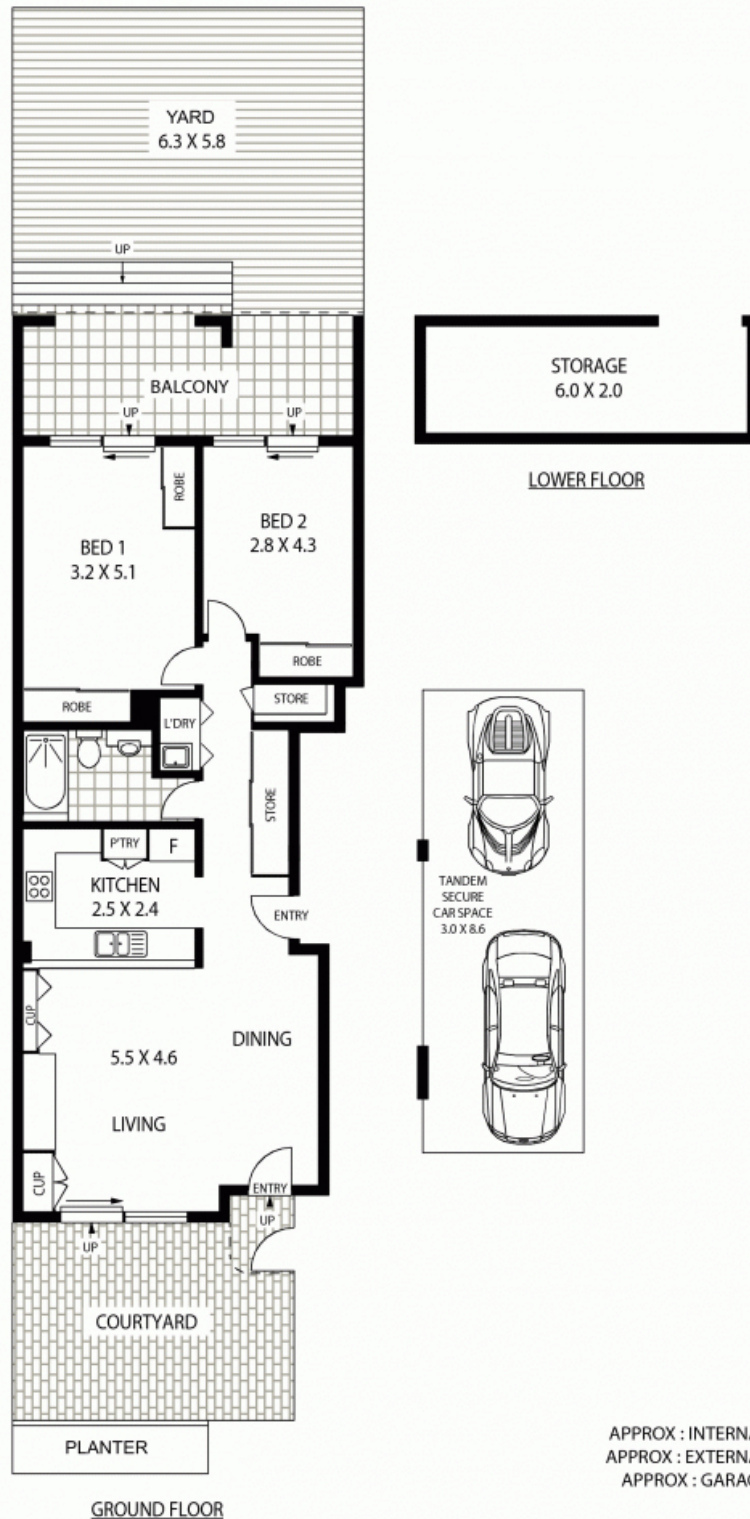
**Bond:** \$3000

<https://www.cpsproperty.com.au>

Perfectly positioned at the end of a cul-de-sac the NeoMetro building apartments are all north facing and offer a genuine community atmosphere.

This generously proportioned two bedroom unit will impress:

- North facing, flooded with natural light and bamboo floors throughout
- Smeg gas



15/58 BELMONT STREET

ALEXANDRIA

Floor Plan Disclaimer: Mind the Gap (mtg) floor plans / site plans are intended as an approximate guide only. No representations or warranties of any nature are given or intended and any person using this information other than as a guide should always rely on their own enquiries. Mind the Gap property marketing services / 1300 133 145 / Photography, Floor plans, Copywriting, Video, Online, Design / [www.mindthegap.com.au](http://www.mindthegap.com.au)

Plans shown are only indicative of layout. Dimensions are approximate.

**Alexandria, NSW**  
15/58 Belmont Street