



Sydney, NSW
5D/161 Kent Street

2 BED
2 BATH
1 CAR

CPS Property
passionately committed

**DESIGNER APARTMENT WITH STUNNING HARBOUR
OUTLOOK
OPEN FOR INSPECTION: BY APPOINTMENT**

Available: 3 September 2014
Initial Lease Period: 6 or 12 months
Inspect: By Appointment

LEASED

Contact: Jacob O'Neill
0403 042 525

Type: Apartment

Date Available: 03/09/2014

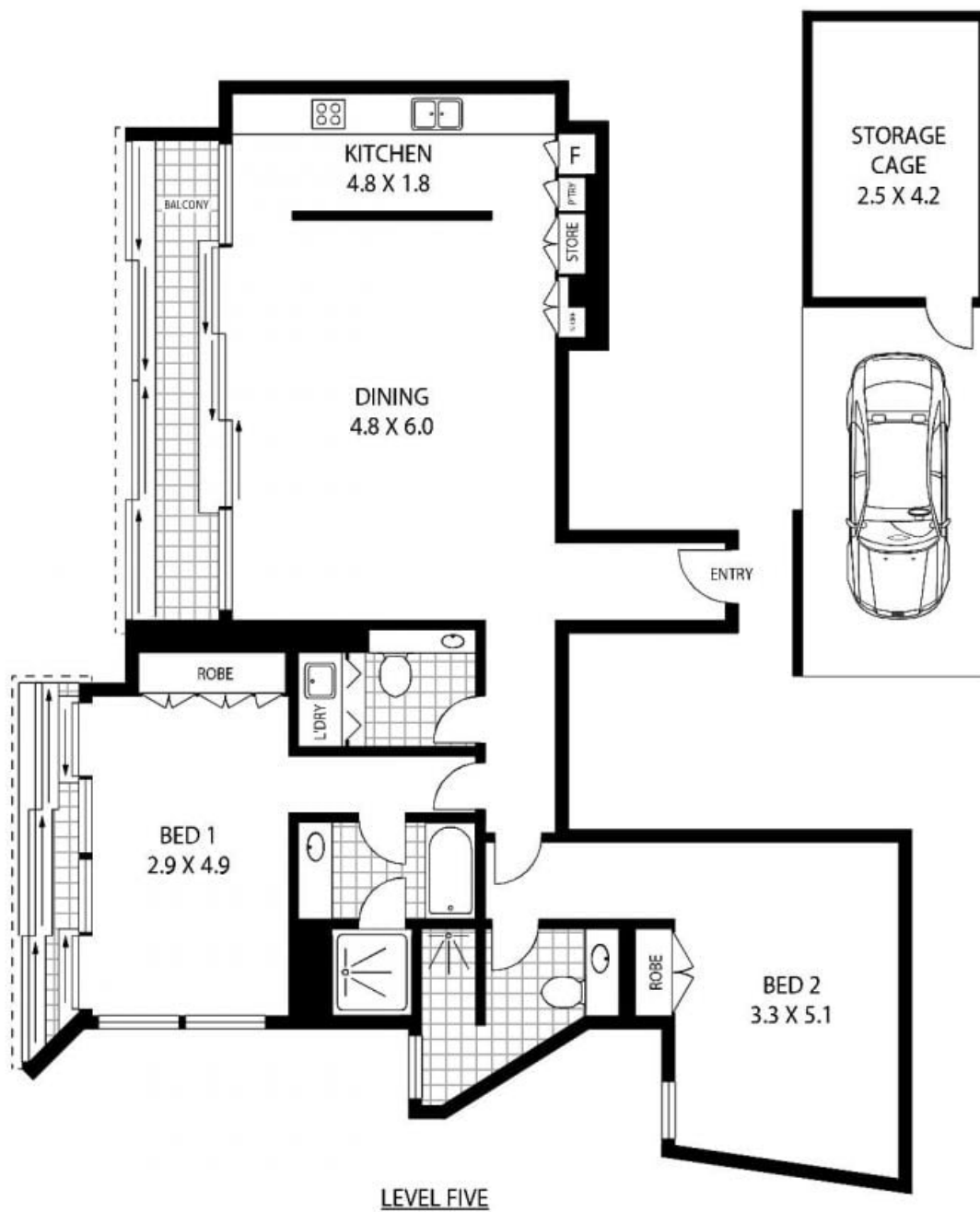
Bond: \$4400

<https://www.cpsproperty.com.au>

Perfectly positioned within the prestigious 'Stamford Marque' building, this generously sized 125sqm apartment has state of the art fixtures and finishes.

The building facilities include concierge, indoor swimming pool, sauna & gym.

- Huge marble kitchen with Smeg appliances



5D/161 KENT STREET

SYDNEY

Floor Plan Disclaimer: The Gap (mtg) floor plans / site plans are intended as an approximate guide only. No representations or warranties of any nature are given or intended and any person using this information other than as a guide should always rely on their own enquiries. Mind the Gap property marketing services / 1300 133 145 / Photography, Floor plans, Copywriting, Video, Online, Design / www.mindthegap.com.au

APPROX : INTERNAL AREA ~ 125 SQM
APPROX : CAR + STORAGE AREA ~ 25 SQM

Plans shown are only indicative of layout. Dimensions are approximate.

Sydney, NSW
5D/161 Kent Street