



Alexandria, NSW
B705/222 Botany Road

1 BED
1 BATH
0 CAR

 **CPS Property**
passionately committed

**MODERN ONE BEDROOM IN HIGHLY SOUGHT AFTER BUILDING
OPEN FOR INSPECTION: BY APPOINTMENT**

Available: NOW
Initial Lease Period: 6 - 12 months
Inspect: By Appointment

LEASED

Contact: Shaun Ellis
0419 291 073

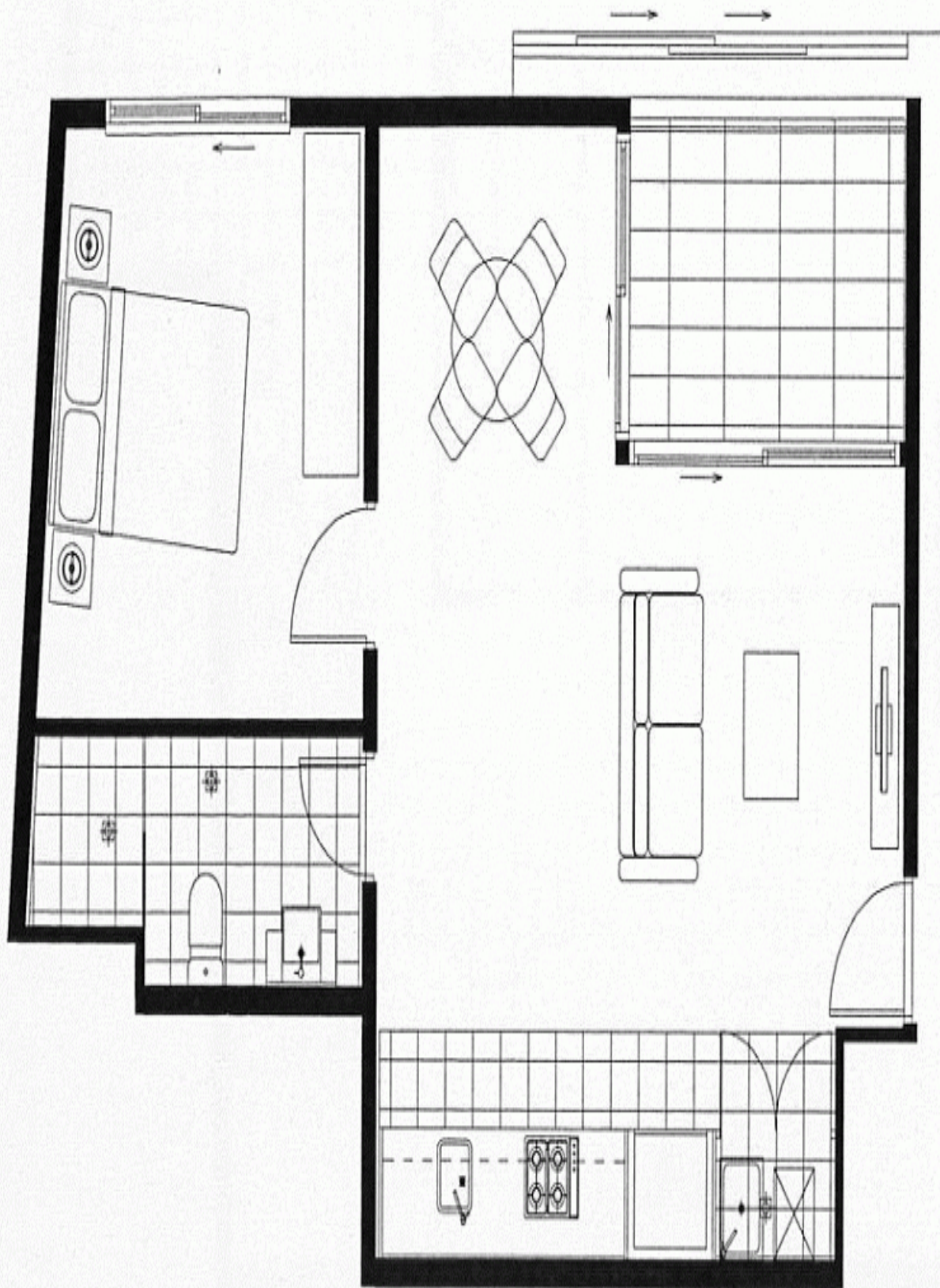
Type: Apartment
Date Available: 23/07/2014

Bond: \$2000

<https://www.cpsproperty.com.au>

This modern one bedroom apartment is situated in a secure environmentally conscious building completed only 2 years ago. The private and quiet apartment provides a large open plan living area, which opens onto a balcony with district views.

Take full advantage of the convenient location with the supermarket and deli downstairs and Alexandria Park only one block away featuring tennis courts and children's playground and Green Square station only 400m away.



Plans shown are only indicative of layout. Dimensions are approximate.

Alexandria, NSW
B705/222 Botany Road