



Cremorne, NSW
2/49 Grasmere Road

3 BED **2** BATH **2** CAR



LUXURY URBAN TOWNHOME
OPEN FOR INSPECTION: SAT 5 JULY - 11:00 TO 11:15AM

Available: 23 July 2014
Initial lease period: 12 months
Inspect: Sat 5 July - 11:00 to 11:15am

Perfectly positioned with a north aspect and tranquil views extending over Middle Harbour and beyond, this luxury townhome is moments to CBD buses and a five minute stroll to Neutral Bay's cafe and shopping precinct.

- 3 spacious bedrooms; 2 with BIRs
- 3rd bedroom opening to a huge courtyard
- Huge lounge/dining flowing onto a North facing balcony
- Middle Harbour views across to Northbridge
- CaesarStone gas kitchen
- 50m2 dual lock up garage with storage room
- Ducted air conditioning throughout

Please contact Amber at CPS Property on 0417 732 483 for further

LEASED

Contact: Jacob O'Neill
0403 042 525

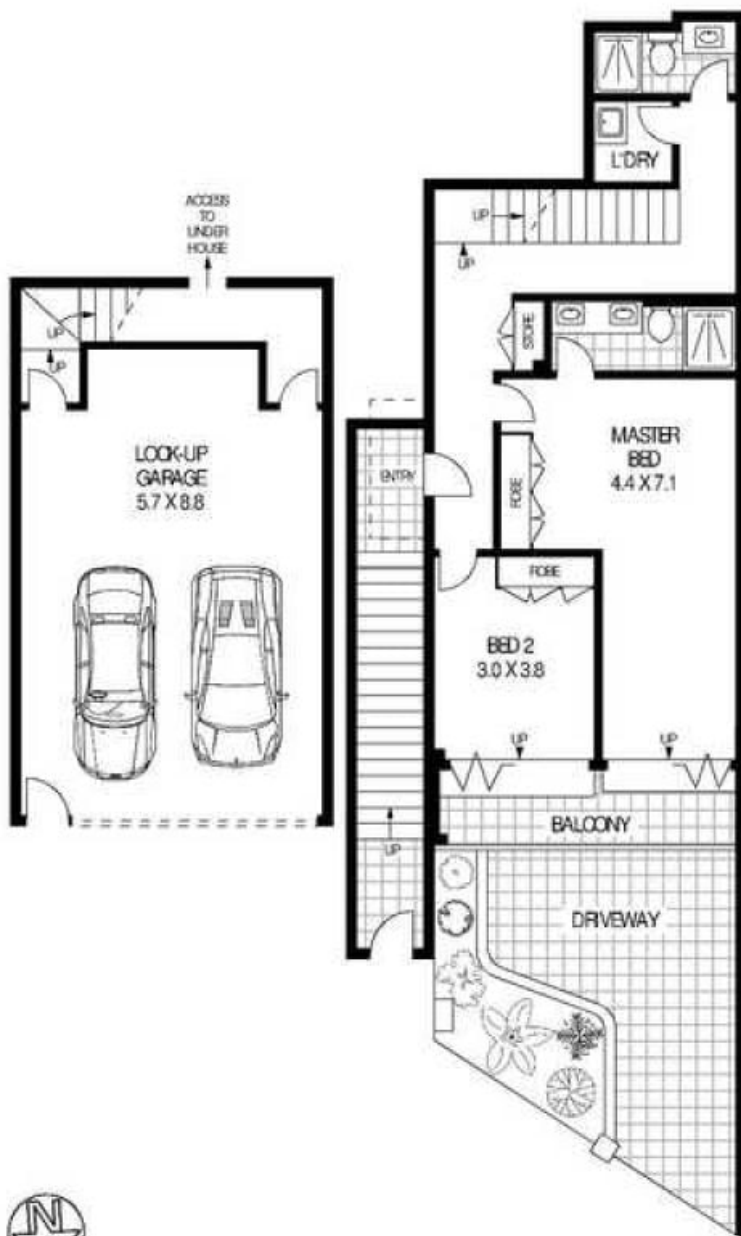
Type: Townhouse

Date Available: 24/07/2014

Land: 207m2

Bond: \$5600

<https://www.cpsproperty.com.au>



TOP FLOOR



49B GRASMERE ROAD

CREMORNE

Floor Plan Disclaimer: Mind the Gap (mtg) floor plans/ site plans are intended as an approximate guide only. No representation or warranties of any nature are given or intended and any person using this information other than as a guide should always rely on their own enquiries. Mind the Gap property marketing services/ 1300 130 145/ Photography, Floor plans Copywriting, Video, Online, Design / www.mindthegap.com.au

Plans shown are only indicative of layout. Dimensions are approximate.

Cremorne, NSW
2/49 Grasmere Road