

Marrickville, NSW
2/43 George Street

2 BED **2** BATH **1** CAR

CPS Property
passionately committed

******LEASED*** - INSPECTION CANCELLED ****
SATURDAY JANUARY 10TH AT 10AM - INSPECTION CANCELLED**

Date Available: Now
Initial Lease Period: 6 or 12 months
Open for Inspection: ** CANCELLED **Saturday 11th of January at 10 -10.15am.

LEASED

Contact: Shaun Ellis
0419 291 073

Type: Apartment

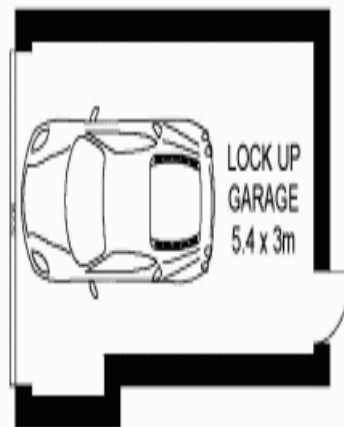
Date Available: 06/01/2014

Bond: \$2720

<https://www.cpsproperty.com.au>

HOLDING DEPOSIT TAKEN

This 142 sqm contemporary townhouse is an inviting light filled haven dedicated to easy indoor/outdoor living. It is within a short stroll to Marrickville village, parks and a choice of city trains.

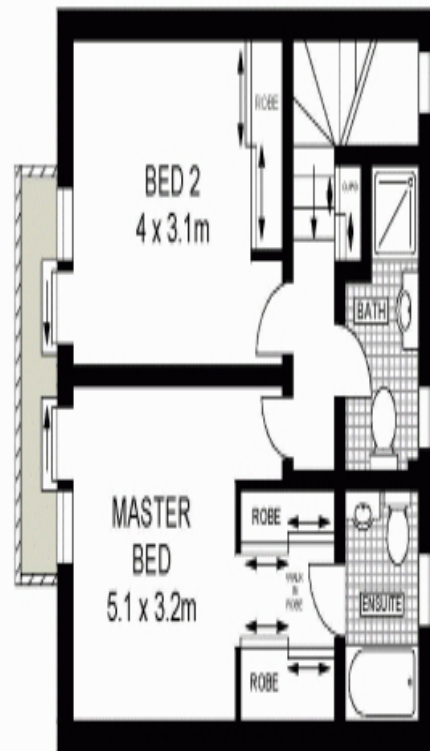


BASEMENT



GROUND FLOOR

TO
BASEMENT



FIRST FLOOR



Scale in metres, indicative only. Dimensions are approximate. All information contained herein is gathered from sources we believe to be reliable. However we cannot guarantee its accuracy and interested persons should rely on their own enquiries.



2/43 George Street, Marrickville

Plans shown are only indicative of layout. Dimensions are approximate.

Marrickville, NSW
2/43 George Street