

Marrickville, NSW
2/43 George Street

2 BED **2** BATH **1** CAR

CPS Property
passionately committed

**2 BEDROOM TOWNHOUSE CONVENIENTLY LOCATED
- OPEN FOR INSPECTION - TBA**

Date Available - 23rd December, 2013
Initial Lease Period: 6 or 12 months
Open for Inspection: TBA

This 142 sqm contemporary townhouse is an inviting light filled haven dedicated to easy indoor/outdoor living. It is within a short stroll to Marrickville village, parks and a choice of city trains.

LEASED

Contact: Shaun Ellis
0419 291 073

Type: Apartment

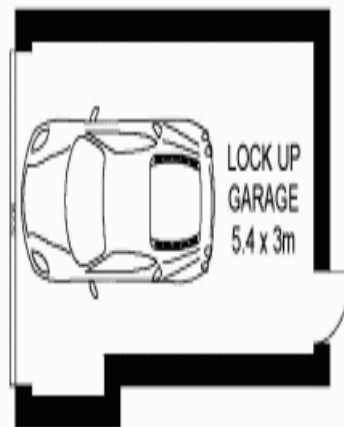
Date Available: 23/12/2013

Bond: \$2720

<https://www.cpsproperty.com.au>

* Private courtyard and easycare, manicured garden

* Bright open plan combined lounge and dining living space

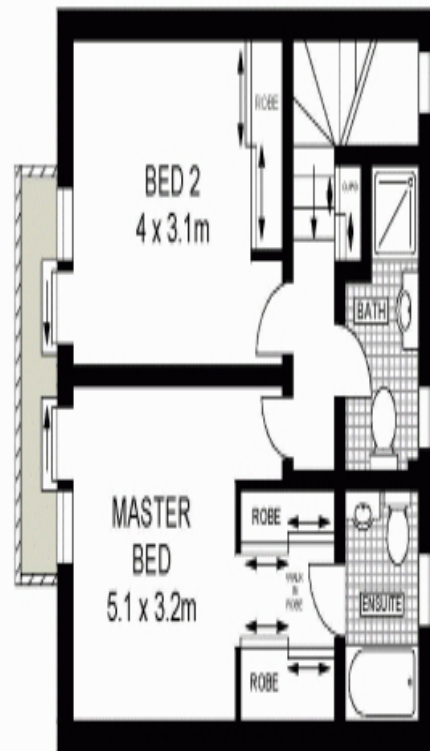


BASEMENT



GROUND FLOOR

TO
BASEMENT



FIRST FLOOR



Scale in metres, indicative only. Dimensions are approximate. All information contained herein is gathered from sources we believe to be reliable. However we cannot guarantee its accuracy and interested persons should rely on their own enquiries.



2/43 George Street, Marrickville

Plans shown are only indicative of layout. Dimensions are approximate.

Marrickville, NSW
2/43 George Street