



Alexandria, NSW

15/58 Belmont Street

2 BED **1** BATH **2** CAR



142 SQM GROUND FLOOR CONTEMPORARY APARTMENT WITH 2 COURTYARDS - INSPECT BY APPOINTMENT

Available: 1st October
Initial lease period: 12 months
Inspect: By Appointment

LEASED

Contact: Shaun Ellis
0419 291 073

Type: Apartment

Date Available: 01/10/2013

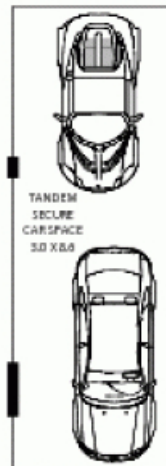
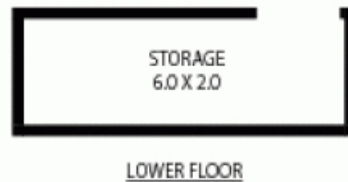
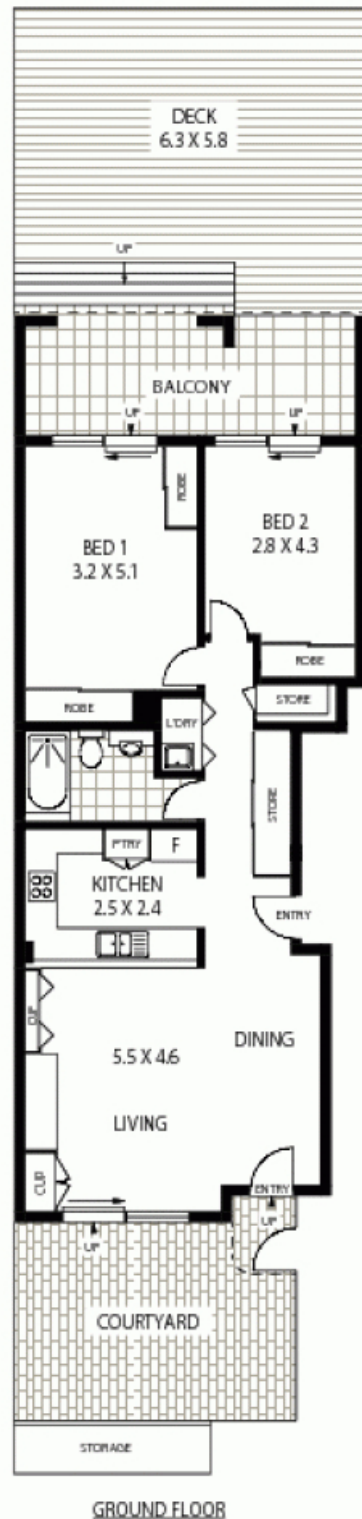
Bond: \$3000

<https://www.cpsproperty.com.au>

Perfectly positioned at the end of a cul-de-sac the NeoMetro building apartments are all north facing and offer a genuine community atmosphere.

This generously proportioned two bedroom unit will impress:

- North facing, flooded with natural light and bamboo floors throughout
- Smeg gas kitchen with dishwasher and stone bench tops
- 2 courtyards with excellent cross flow ventilation



APPROX : INTERNAL SQM : - 78 SQM
APPROX : EXTERNAL SQM : - 64 SQM
APPROX : GARAGE SQM : - 26 SQM
TOTAL: 168 SQM

15/58 BELMONT STREET

ALEXANDRIA

Floor Plan Disclaimer: Mind the Gap (mtg) floor plans / site plans are intended as an approximate guide only. No representations or warranties of any nature are given or intended and any person using this information other than as a guide should always rely on their own enquiries. Mind the Gap property marketing services / 1900 135 145 / Photography, Floor plans, Copywriting, Video, Online, Design / www.mindthegap.com.au

Plans shown are only indicative of layout. Dimensions are approximate.

Alexandria, NSW
15/58 Belmont Street