



Alexandria, NSW

6/170 Wyndham Street

1 BED **1** BATH **0** CAR

CPS Property
passionately committed

QUIET, PET FRIENDLY, SPLIT LEVEL APARTMENT OPPOSITE ALEXANDRIA PARK - BY APPOINTMENT.

Available: 2nd September

Initial Lease Period: 6 or 12 months

Inspect: By Appointment.

Large split level one bedroom apartment across the road from Alexandria Park.

- Boutique building of only 10 units
- Perfectly positioned in a quiet & convenient location
- Living area opens onto entertainer's courtyard
- Quiet & tranquil apartment
- Generous sized lounge/dining area

LEASED

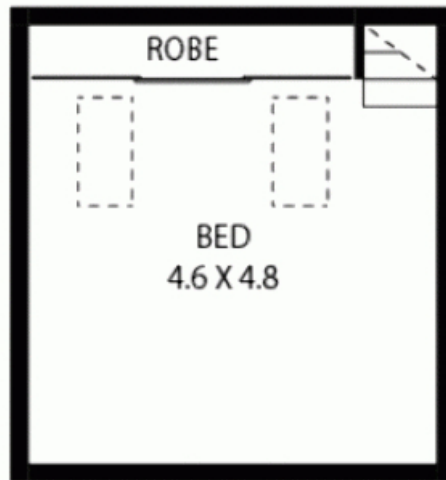
Contact: Shaun Ellis
0419 291 073

Type: Apartment

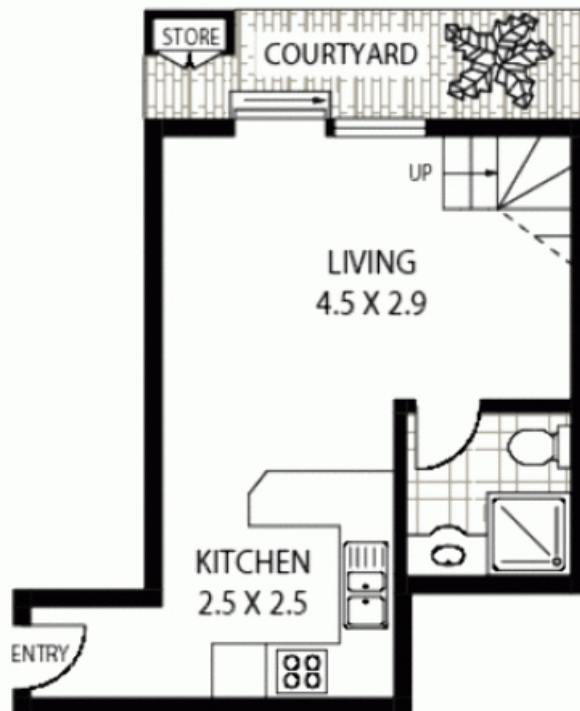
Date Available: 02/09/2013

Bond: \$2200

<https://www.cpsproperty.com.au>



FIRST FLOOR



GROUND FLOOR



• APPROX : TOTAL AREA ~ 58 SQM

6/170 WYNDHAM STREET

ALEXANDRIA

Floor Plan Disclaimer: Mind the Gap (mtg) floor plans / site plans are intended as an approximate guide only. No representations or warranties of any nature are given or intended and any person using this information other than as a guide should always rely on their own enquiries. mtg property marketing services
- 1300 133 145 - photography, floor plans, copywriting, video, design, projects - www.mindthegap.com.au

Plans shown are only indicative of layout. Dimensions are approximate.

Alexandria, NSW
6/170 Wyndham Street