

**Glebe, NSW**  
289 Broadway

**5** BED  
**2** BATH  
**2** CAR

**CPS Property**  
passionately committed

#### BY APPOINTMENT ONLY

Available Date: 10th April 2012

Initial Lease Period: 12 months

Open for Inspection: BY APPOINTMENT ONLY- Please Call CPS Property on 1300 937 277

'LIVE, WORK and PLAY' - 'Circa 1860'

3 level, Mixed-use zoned, Victorian Terrace on large 155sqm block of land.

This property is a must to inspect. This huge 5 bedroom residence over 3 levels - comprises 2 spacious bedrooms on the top floor, main with french doors to balcony plus 2 bedrooms (one with direct access to rear courtyard), functional kitchen and bathroom on middle level plus living/dining, 5th bedroom and bathroom on the lower ground level. Property also includes 4 car parking bays plus paved rear courtyard.

#### LEASED

**Contact:** Jacob O'Neill  
0403 042 525

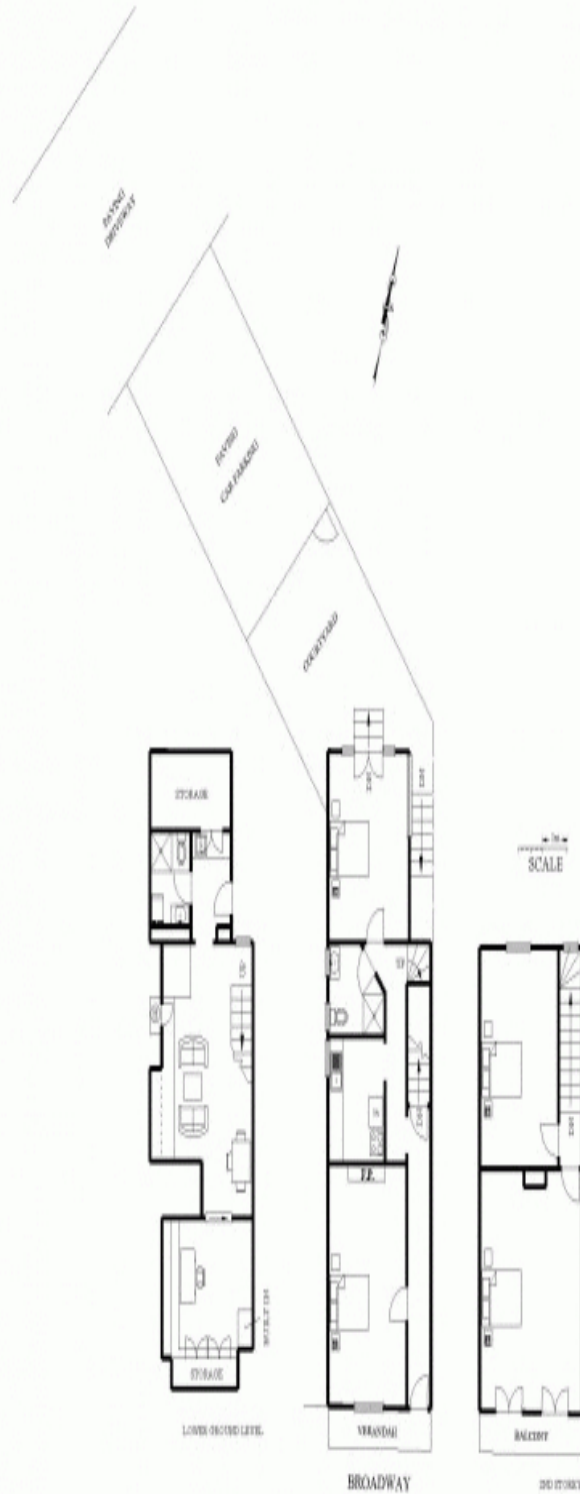
**Type:** Terrace

**Date Available:** 10/04/2012

**Bond:** \$4400

<https://www.cpsproperty.com.au>

## 289 BROADWAY, GLEBE



This plan is to be used as guide only. All interested parties must make and rely upon their own enquiries. Prepared by: Brian Tucker Surveys Pty Ltd. Phone: 966892819 Ref. No. 111-00003

Plans shown are only indicative of layout. Dimensions are approximate.

**Glebe, NSW**  
289 Broadway