



Redfern, NSW
310/1 Marian Street

2 BED
2 BATH
1 CAR

CPS Property
passionately committed

OPEN FOR INSPECTION SAT 21ST JAN 12.15-12.30PM

Available Date: 4th February 2012

Initial Lease Period: 6 or 12 months

Open for Inspection: Saturday 21st January 12.15 - 12.30pm

LEASED

Contact:

Type: Apartment

Date Available: 04/02/2012

Bond: \$3080

<https://www.cpsproperty.com.au>

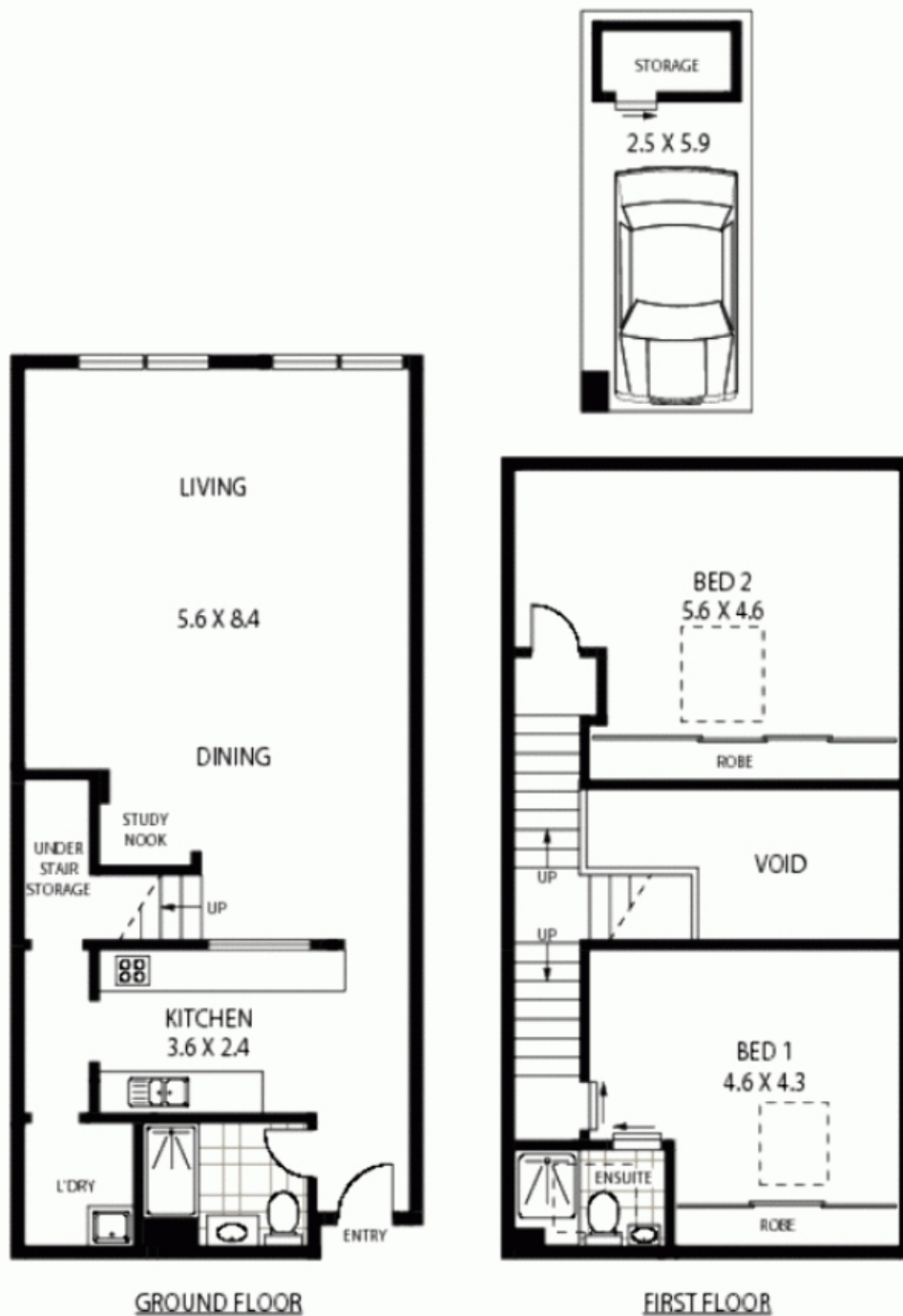
Set within the renowned and highly sought after Water tower complex, this fully renovated New York style warehouse apartment features a massive 134 sqm of living area over 2 levels with sweeping district views to Anzac Bridge.

â€¢ Massive open plan living with an abundance of natural light

â€¢ Exposed beams and brick wall with timber floors

â€¢ Large galley kitchen with s/s appliances and Caesar stone bench tops

â€¢ 2 huge bedrooms upstairs with BIRs, main with en-suite



310/1 MARIAN STREET

REDFERN

*Disclaimer: mtg - mind the gap floor plans & site plans are intended as a guide only. Individuals should always rely on their own enquiries for exact measurements and no warranties are intended or given. Please Note: Any internal area measurement total that may be included does not include any void spaces or robes. Any external area measurement total that may be included does not include the total site plan area (ie total grounds and garden areas). mtg - mind the gap - 1 300 133 145 - www.mindthegap.com.au

- APPROX : GROSS INTERNAL AREA :- 134 SQM
- APPROX : GROSS EXTERNAL AREA :- 15 SQM
- APPROX : GROSS TOTAL AREA :- 149 SQM

Plans shown are only indicative of layout. Dimensions are approximate.

Redfern, NSW
310/1 Marian Street