

Westmead, NSW
39/32-34 Mons Road

2 BED **2** BATH **1** CAR

CPS Property
passionately committed

BY APPOINTMENT ONLY

Available Date: 24th November 2011

Initial Lease Period: 6 months

Open for Inspection: By appointment Only- Call 1300 937 277

Near new two bedroom apartment featuring

- Built-ins to both rooms
- Ensuite to main
- Large living area
- Euro style kitchen with ceasar stone bench tops
- Stainless steel appliances
- Ducted air-con
- Security block
- Lift

LEASED

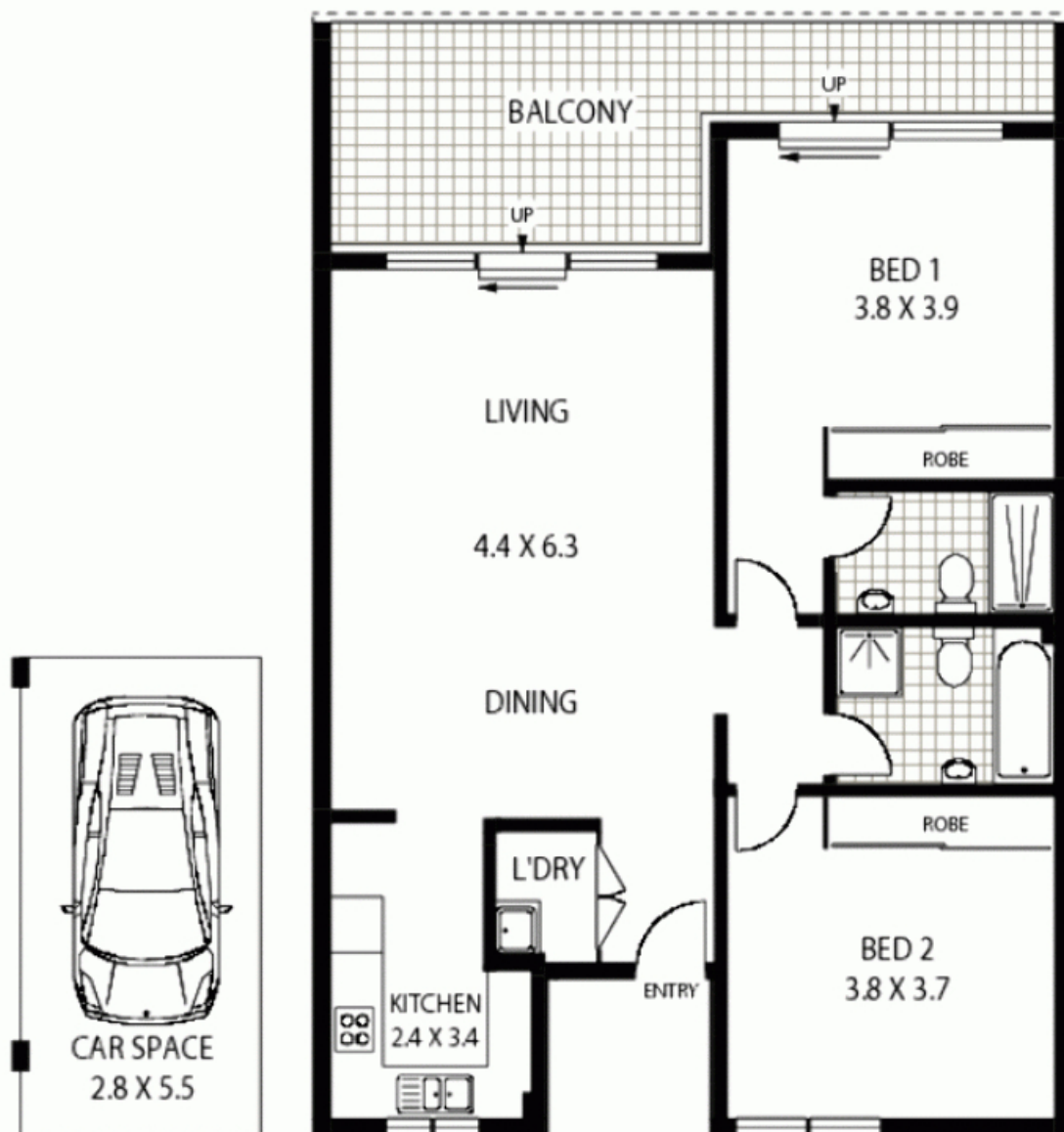
Contact: Shaun Ellis
0419 291 073

Type: Unit

Date Available: 24/11/2011

Bond: \$1640

<https://www.cpsproperty.com.au>



BASEMENT

THIRD FLOOR



39/32-34 MONS ROAD

WESTMEAD

Floor Plan Disclaimer: Mind the Gap (mtg) floor plans / site plans are intended as an approximate guide only. No representations or warranties of any nature are given or intended and any person using this information other than as a guide should always rely on their own enquiries. mtg property marketing services - 1300 133 745 - photography, floor plans, copywriting, video, design, projects - www.mindthegap.com.au

APPROX : GARAGE AREA :- 15 SQM
APPROX : BALCONY AREA :- 16 SQM
APPROX : INTERNAL AREA :- 82 SQM

Plans shown are only indicative of layout. Dimensions are approximate.

Westmead, NSW
39/32-34 Mons Road