



Sydney, NSW
2803/157 Liverpool Street

3 BED
2 BATH
2 CAR

CPS Property
passionately committed

WORLD CLASS CITY APARTMENT WITH HARBOUR VIEWS

Take the security lift to the 28th floor and step inside this awe inspiring WOHA designed apartment with views spanning the Blue Mountains to the west, North Head to the east and Cronulla to the south.

There are 3 double bedrooms, a study, 2.5 bathrooms and open plan living areas with an entertainer's gas kitchen and big alfresco dining balcony.

"The Hyde" offers a 24-hour concierge service, 25-metre wet edge lap pool, rooftop BBQ, sauna, gym, library, bar, conference facilities and pool room.

LEASED

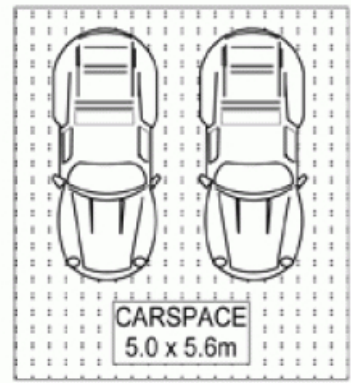
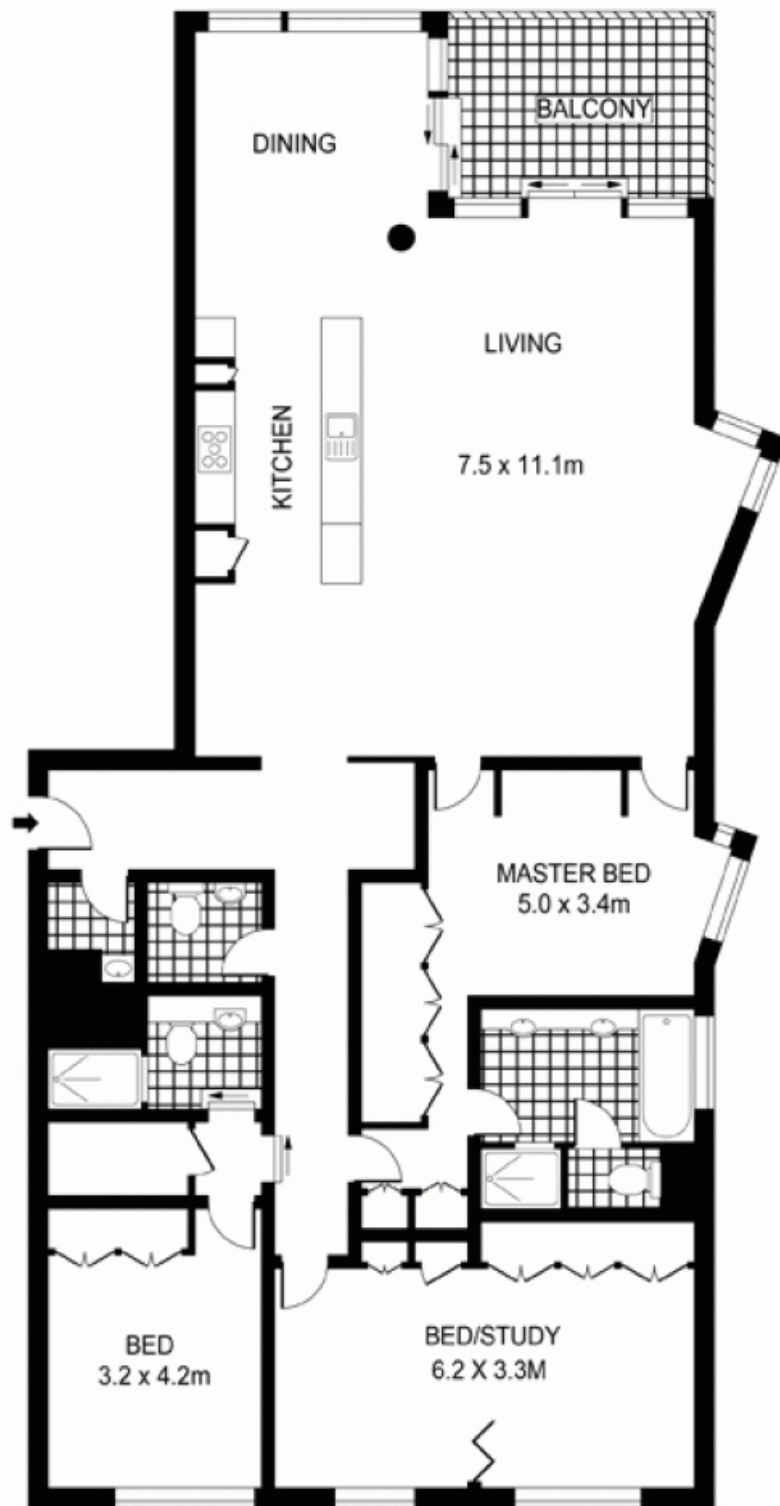
Contact: Shaun Ellis
0419 291 073

Type: Apartment

Date Available: 13/01/2012

Bond: \$8000

<https://www.cpsproperty.com.au>



0 1 2 3 4 5
SCALE (METRES)

LEVEL TWENTY EIGHT

Plans shown are for presentation purposes only and are not part of any legal document or title. They are subject to errors, omissions, inaccuracies and should not be used as a sole and accurate reference. Interested parties should make their own inquiries using independent sources.

INT : 179m²

N

2803/157 LIVERPOOL STREET

SYDNEY

Plans shown are only indicative of layout. Dimensions are approximate.

Sydney, NSW
2803/157 Liverpool Street