



Alexandria, NSW
11/58 Belmont Street

2 BED
1 BATH
2 CAR

CPS Property
passionately committed

**GENEROUS TWO BEDROOM COURTYARD
APARTMENT IN GREAT COMPLEX
OPEN FOR INSPECTION: BY APPOINTMENT**

Available: NOW
Initial Lease Period: 6 or 12 months
Inspect: By Appointment

Perfectly positioned at the end of a cul-de-sac the NeoMetro building apartments are all north facing and offer a genuine community atmosphere.

This generously proportioned two bedroom unit will impress.

- North facing & flooded with natural light
- Stainless steel gas kitchen with dishwasher & stone bench tops

LEASED

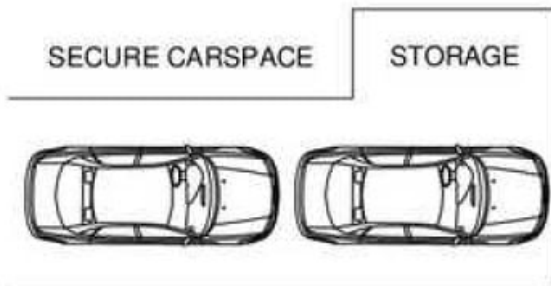
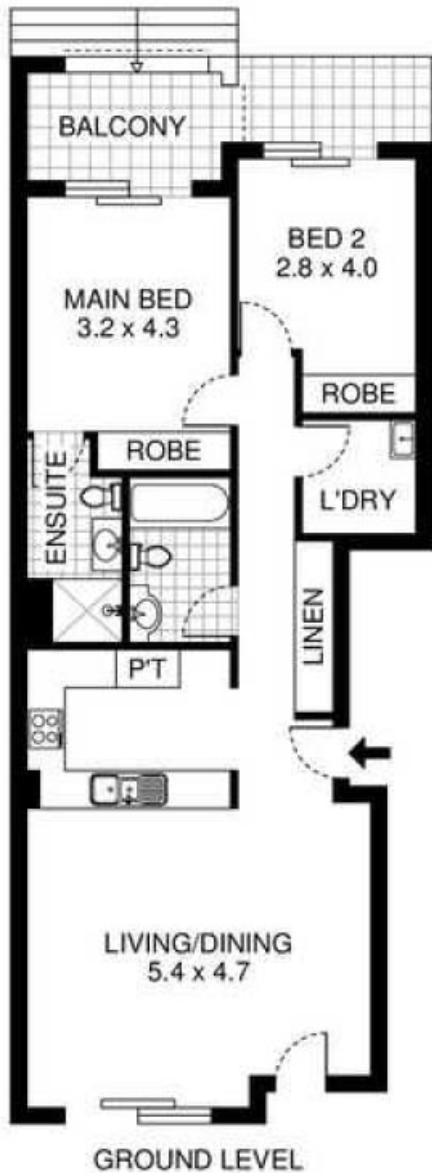
Contact: Jacob O'Neill
0403 042 525

Type: Apartment

Date Available: 20/03/2015

Bond: \$2880

<https://www.cpsproperty.com.au>



11/58 Belmont Street, Alexandria

PLEASE NOTE:
THIS PLAN HAS BEEN PROVIDED BY EMPIRE PLANS FOR
MARKETING PURPOSES ONLY. NO RELIANCE SHOULD
BE PLACED ON THIS PLAN FOR CONSTRUCTION OR
DEMOLITION PURPOSES. EMPIRE PLANS 0402 844 843



Plans shown are only indicative of layout. Dimensions are approximate.

Alexandria, NSW
11/58 Belmont Street